

Additional Locations

Alberta Region

Toll Free 1-800-232-7217
albertasales@comcopipe.com

Corporate Head Office

5910 17 Street NW
Edmonton, Alberta
Canada T6P 1S5
Telephone: 780-440-2000

Edmonton 42 Office

4203 53 Avenue
Edmonton, Alberta
Canada T6B 3P4
Telephone: 587-754-6250

Fort McMurray Office

300 Macdonald Crescent
Fort McMurray, Alberta
Canada T9H 4B6
Telephone: 780-743-3404

Horizon Office

Building 110A-RT-5
Fort McMurray, Alberta
Canada T9H 3H5
Telephone: 780-215-4410

Lloydminster Office

6478 63 Street Close
Lloydminster, Alberta
Canada T9V 3T6
Telephone: 780-485-4686

Grande Prairie Office

9321 141 Avenue
Clairmont, Alberta
Canada T8V 8E2
Telephone: 587-771-3282

Bonnyville Office

5807 47 Avenue
Bonnyville, Alberta
Canada T9N 0B3
Telephone: 780-485-4694

British Columbia Region

Fort St. John Office

10912 89 Avenue
Fort St. John, British Columbia
Canada V1J 6T3
Telephone: 778-576-4540

Prairie Region

Toll Free 1-866-521-3900
prairiesales@comcopipe.com

Winnipeg Office

116 4 Street East
Stonewall, Manitoba
Canada R0C 2Z0
Telephone: 204-467-8798
Fax: 204-467-5588

Eastern Region

Toll Free 1-800-265-7176
easternsales@comcopipe.com

Guelph Office

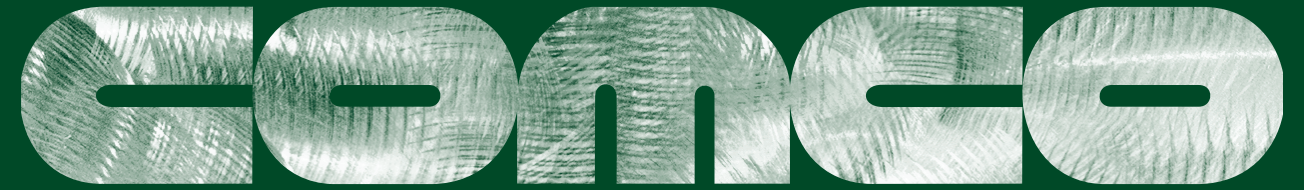
14 Kerr Crescent
Puslinch, Ontario
Canada N0B 2J0
Telephone: 519-763-1114

Sarnia Office

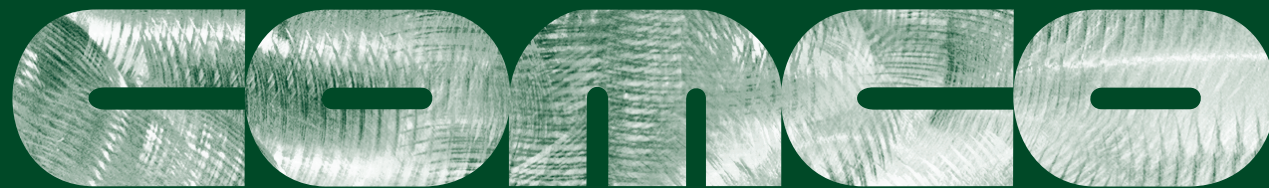
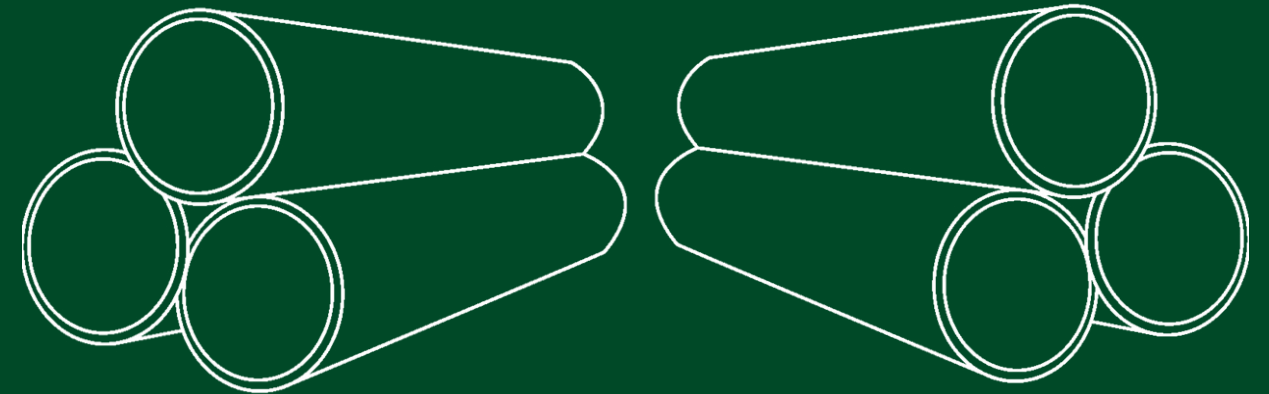
1018 Prescott Drive North
Sarnia, Ontario
Canada N7T 7H3
Telephone: 519-332-6666

Quebec Office

Mike Kelly
Regional Sales Manager
Montreal, Quebec
Telephone: 514-809-7977



Canada's Choice for Piping Products



Canada's Choice for Piping Products

Scan here!

Disclaimer

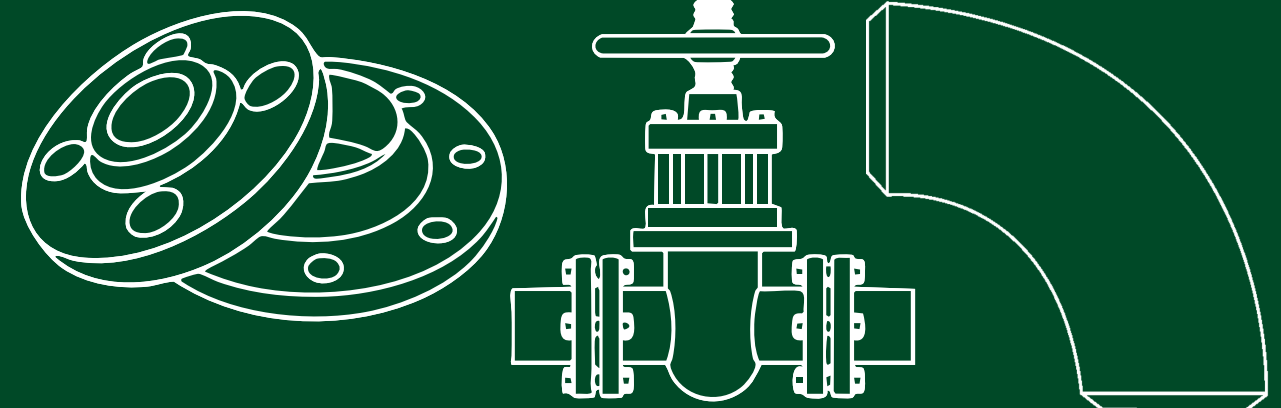
This document is for information purposes only. The information contained in this document has been compiled from sources believed to be reliable. However while every effort has been made to ensure this information is correct, Comco Pipe & Supply Company cannot be made liable for any loss resulting from the use of information from this book no matter how that loss may occur.



Everything you need, all in one spot—scan to access our product book, MTR portal, and support tools.

DIMENSIONS AND WEIGHTS

Steel Tubular Products, Fittings, Flanges, and Valves
A Division of Russel Metals Inc.





Size		Wall Thickness		Weight		Identification	
Nominal Diameter	Outside Diameter	inch	mm	lb/ft	kg/m	STD XS XXS	Schedule No.
inch	mm						
1/8	0.405	0.068	1.73	0.24	0.37	STD	40
		0.095	2.41	0.31	0.47	XS	80
1/4	0.540	0.088	2.24	0.43	0.63	STD	40
		0.119	3.02	0.54	0.80	XS	80
3/8	0.675	0.091	2.31	0.57	0.84	STD	40
		0.126	3.20	0.74	1.10	XS	80
		0.109	2.77	0.85	1.27	STD	40
		0.147	3.73	1.09	1.62	XS	80
1/2	0.840	0.188	4.78	1.31	1.95		160
		0.294	7.47	1.72	2.56	XXS	
		0.113	2.87	1.13	1.68	STD	40
		0.154	3.91	1.48	2.19	XS	80
3/4	1.050	0.219	5.56	1.95	2.89		160
		0.308	7.82	2.44	3.64	XXS	
		0.133	3.38	1.68	2.50	STD	40
		0.179	4.55	2.17	3.24	XS	80
1	1.315	0.250	6.35	2.85	4.24		160
		0.358	9.09	3.66	5.45	XXS	
		0.140	3.56	2.27	3.39	STD	40
		0.191	4.85	3.00	4.46	XS	80
1 1/4	1.660	0.250	6.35	3.77	5.61		160
		0.382	9.70	5.22	7.76	XXS	
		0.145	3.68	2.72	4.05	STD	40
		0.200	5.08	3.63	5.41	XS	80
1 1/2	1.900	0.281	7.14	4.86	7.24		160
		0.400	10.16	6.41	9.55	XXS	
		0.083	2.11	2.03	3.03		
		0.109	2.77	2.64	3.93		
		0.125	3.18	3.01	4.48		
		0.141	3.58	3.37	5.01		
2	2.375	0.154	3.91	3.66	5.44	STD	40
		0.172	4.37	4.05	6.03		
		0.188	4.78	4.40	6.55		
		0.218	5.54	5.03	7.48	XS	80
		0.250	6.35	5.68	8.45		
		0.281	7.14	6.29	9.36		
		0.344	8.74	7.47	11.12		160
		0.436	11.07	9.04	13.45	XXS	
		0.083	2.11	2.48	3.69		
		0.109	2.77	3.22	4.80		
		0.125	3.18	3.67	5.48		
		0.141	3.58	4.12	6.13		
		0.156	3.96	4.53	6.74		
		0.172	4.37	4.97	7.40		
2 1/2	2.875	0.188	4.78	5.40	8.04		
		0.203	5.16	5.80	8.64	STD	40
		0.216	5.49	6.14	9.14		
		0.250	6.35	7.02	10.44		
		0.276	7.01	7.67	11.41	XS	80
		0.375	9.52	10.02	14.91		160
		0.552	14.02	13.71	20.40	XXS	

Stock Pipe



The management of Comco Pipe & Supply Company considers the health and safety of its employees, the security of its assets and protection of the environment as important as any other phase of the Company's operation or administration.

It is the policy of the Company, therefore, to provide and maintain safe and healthy working conditions, safe equipment and to follow operating practices that will safeguard all employees, the public, the environment and corporate property. The elimination, at the source, of dangers to health, safety and physical well being of its workers is of paramount importance.

It is our policy not to compromise on health, safety, and environment for reasons of economy or productivity. This commitment includes compliance with all applicable laws and regulations but is not limited to minimal compliance.

While the application of health, safety, and environment standards is the responsibility of line management, all employees must take appropriate or necessary measures to protect their own safety and that of their colleagues. Unacceptable performance of health and safety duties will not be tolerated.



Size		Wall Thickness		Weight		Identification	
Nominal Diameter	Outside Diameter	inch	mm	lb/ft	kg/m	STD	Schedule No.
						XS	
inch	inch						
mm	mm						
3 80	3.500 88.9	0.083	2.11	3.03	4.52		
		0.109	2.77	3.95	5.88		
		0.125	3.18	4.51	6.72		
		0.141	3.58	5.06	7.53		
		0.156	3.96	5.58	8.30		
		0.172	4.37	6.12	9.11		
		0.188	4.78	6.66	9.92		30
		0.216	5.49	7.58	11.29	STD	40
		0.250	6.35	8.69	12.93		
		0.281	7.14	9.67	14.40		
		0.300	7.62	10.26	15.27	XS	80
		0.438	11.13	14.34	21.35		160
		0.600	15.24	18.60	27.68	XXS	
		3 1/2 90	4.000 101.6	0.125	3.18	5.18	7.72
0.141	3.58			5.82	8.65		
0.156	3.96			6.41	9.54		
0.172	4.37			7.04	10.48		
0.188	4.78			7.66	11.41		30
0.226	5.74			9.12	13.57	STD	40
0.250	6.35			10.02	14.92		
0.281	7.14			11.17	16.63		
0.318	8.08			12.52	18.64	XS	80
0.636	16.15			22.87	34.08	XXS	
4 100	4.500 114.3	0.083	2.11	3.92	5.84		
		0.109	2.77	5.12	7.62		
		0.125	3.18	5.85	8.71		
		0.141	3.58	6.57	9.78		
		0.156	3.96	7.24	10.78		
		0.172	4.37	7.96	11.85		
		0.188	4.78	8.67	12.91		30
		0.203	5.16	9.32	13.89		
		0.219	5.56	10.02	14.91		
		0.237	6.02	10.80	16.08	STD	40
		0.250	6.35	11.36	16.91		
		0.281	7.14	12.67	18.87		
		0.312	7.92	13.97	20.78		
		0.337	8.56	15.00	22.32	XS	80
0.438	11.13	19.02	28.32		120		
0.531	13.49	22.53	33.54		160		
0.674	17.12	27.57	41.03	XXS			
5 125	5.563 141.3	0.109	2.77	6.36	9.46		
		0.156	3.96	9.02	13.41		
		0.188	4.78	10.80	16.09		
		0.219	5.56	12.51	18.61		
		0.258	6.55	14.63	21.77	STD	40
		0.281	7.14	15.87	23.62		
		0.312	7.92	17.51	26.05		
		0.344	8.74	19.19	28.57		
		0.375	9.52	20.80	30.94	XS	80
		0.500	12.70	27.06	40.28		120
		0.625	15.88	32.99	49.12		160
0.750	19.05	38.59	57.43	XXS			



Size		Wall Thickness		Weight		Identification		
Nominal Diameter	Outside Diameter	inch	mm	lb/ft	kg/m	STD XS XXS	Schedule No.	
		inch mm	inch mm					
6 150	6.625 168.28		0.109	2.77	7.59	11.31		
			0.125	3.18	8.69	12.95		
			0.141	3.58	9.77	14.54		
			0.156	3.96	10.79	16.05		
			0.172	4.37	11.87	17.66		
			0.188	4.78	12.94	19.27		
			0.203	5.16	13.94	20.76		
			0.219	5.56	15.00	22.31		
			0.250	6.35	17.04	25.36		
			0.280	7.11	18.99	28.26	STD	40
			0.312	7.92	21.06	31.32		
			0.344	8.74	23.10	34.39		
			0.375	9.52	25.05	37.27		
			0.432	10.97	28.60	42.56	XS	80
			0.500	12.70	32.74	48.73		
			0.562	14.27	36.43	54.20		120
			0.625	15.88	40.09	59.68		
			0.719	18.26	45.39	67.56		160
			0.864	21.95	53.21	79.21	XXS	
		8 200	8.625 219.08		0.125	3.18	11.36	16.93
	0.156			3.96	14.12	21.01		
	0.188			4.78	16.96	25.26		
	0.203			5.16	18.28	27.22		
	0.219			5.56	19.68	29.28		
	0.250			6.35	22.38	33.31		20
	0.277			7.04	24.72	36.81		30
	0.312			7.92	27.73	41.24		
	0.322			8.18	28.58	42.55	STD	40
	0.344			8.74	30.45	45.34		
	0.375			9.52	33.07	49.20		
	0.406			10.31	35.67	53.08		60
	0.438			11.13	38.33	57.08		
	0.500			12.70	43.43	64.64	XS	80
	0.562			14.27	48.44	72.08		
	0.594			15.09	51.00	75.91		100
	0.625			15.88	53.45	79.58		
	0.719			18.26	60.77	90.43		120
	0.812			20.62	67.82	100.92		140
	0.875			22.22	72.49	107.88	XXS	
	0.906	23.01	74.76	111.26		160		
10 250	10.750 273.0		0.125	3.18	14.20	21.15		
			0.134	3.40	15.21	22.61		
			0.141	3.58	15.99	23.83		
			0.156	3.96	17.67	26.27		
			0.165	4.19	18.67	27.78		
			0.188	4.78	21.23	31.62		
			0.203	5.16	22.89	34.08		
			0.219	5.56	24.65	36.67		
			0.250	6.35	28.06	41.76		20
			0.279	7.09	31.23	46.49		
			0.307	7.80	34.27	51.01		30
			0.344	8.74	38.27	56.96		
			0.365	9.27	40.52	60.29	STD	40

Size		Wall Thickness		Weight		Identification		
Nominal Diameter	Outside Diameter	inch	mm	lb/ft	kg/m	STD	Schedule No.	
						XS		
inch	inch					XXS		
10 250	10.750 273.0		0.438	11.13	48.28	71.88		
			0.500	12.70	54.79	81.53	XS	60
			0.562	14.27	61.21	91.05		
			0.594	15.09	64.49	95.98		80
			0.625	15.88	67.65	100.69		
			0.719	18.26	77.10	114.71		100
			0.812	20.62	86.26	128.34		
			0.844	21.44	89.38	133.01		120
			1.000	25.40	104.23	155.10	XXS	140
			1.125	28.58	115.75	172.27		160
12 300	12.750 323.8		0.141	3.58	19.01	28.32		
			0.156	3.96	21.00	31.24		5
			0.172	4.37	23.13	34.43		
			0.180	4.57	24.19	35.98		10
			0.203	5.16	27.23	40.55		
			0.219	5.56	29.34	43.64		
			0.250	6.35	33.41	49.71		20
			0.281	7.14	37.46	55.76		
			0.312	7.92	41.48	61.70		
			0.330	8.38	43.81	65.19		30
			0.344	8.74	45.62	67.91		
			0.375	9.52	49.61	73.79	STD	
			0.406	10.31	53.57	79.71		40
			0.438	11.13	57.65	85.82		
			0.500	12.70	65.48	97.44	XS	
			0.562	14.27	73.22	108.93		60
			0.625	15.88	81.01	120.59		
			0.688	17.48	88.71	132.05		80
	0.750	19.05	96.21	143.17				
	0.812	20.62	103.63	154.17				
	0.844	21.44	107.42	159.87		100		
	0.875	22.22	111.08	165.26				
	1.000	25.40	125.61	186.92	XXS	120		
	1.125	28.58	139.81	208.08		140		
	1.312	33.32	160.42	238.69		160		
14 350	14.000 355.6		0.188	4.78	27.76	41.36		
			0.203	5.16	29.94	44.59		
			0.210	5.33	30.96	46.04		
			0.219	5.56	32.26	48.00		
			0.250	6.35	36.75	54.69		10
			0.281	7.14	41.21	61.36		
			0.312	7.92	45.65	67.91		20
			0.344	8.74	50.22	74.76		
			0.375	9.52	54.62	81.25	STD	30
			0.406	10.31	59.00	87.79		
			0.438	11.13	63.50	94.55		40
			0.469	11.91	67.84	100.95		
			0.500	12.70	72.16	107.40	XS	
			0.562	14.27	80.73	120.12		
			0.594	15.09	85.13	126.72		60
			0.625	15.88	89.36	133.04		
	0.688	17.48	97.91	145.76				
	0.750	19.05	106.23	158.11		80		



Size		Wall Thickness		Weight		Identification	
Nominal Diameter	Outside Diameter	inch	mm	lb/ft	kg/m	STD XS XXS	Schedule No.
inch mm	inch mm						
14	14.000	0.812	20.62	114.48	170.34		
		0.875	22.22	122.77	182.69		
		0.938	23.83	130.98	194.98		100
		1.094	27.79	150.93	224.66		120
		1.250	31.75	170.37	253.58		140
		1.406	35.71	189.29	281.72		160
16	16.000	0.188	4.78	31.78	47.34		
		0.203	5.16	34.28	51.06		
		0.219	5.56	36.95	54.96		
		0.250	6.35	42.09	62.65		10
		0.281	7.14	47.22	70.30		
		0.312	7.92	52.32	77.83		20
		0.344	8.74	57.57	85.71		
		0.375	9.52	62.64	93.18	STD	30
		0.406	10.31	67.68	100.71		
		0.438	11.13	72.86	108.49		
		0.469	11.91	77.87	115.87		
		0.500	12.70	82.85	123.31	XS	40
		0.562	14.27	92.75	138.00		
		0.625	15.88	102.72	152.94		
		0.656	16.66	107.60	160.13		60
		0.688	17.48	112.62	167.66		
		0.750	19.05	122.27	181.98		
		0.812	20.62	131.84	196.18		
		0.844	21.44	136.74	203.54		80
		0.875	22.22	141.48	210.52		
0.938	23.83	151.03	224.83				
1.000	25.40	160.35	238.66				
1.031	26.19	164.98	245.57		100		
1.062	26.97	169.59	252.37				
1.125	28.58	178.89	266.30				
1.219	30.96	192.61	286.66		120		
1.438	36.53	223.85	333.21		140		
1.594	40.49	245.48	365.38		160		
18	18.000	0.188	4.78	35.80	53.33		
		0.203	5.16	38.62	57.54		
		0.219	5.56	41.63	61.93		
		0.250	6.35	47.44	70.60		10
		0.281	7.14	53.23	79.25		
		0.312	7.92	58.99	87.75		20
		0.375	9.52	70.65	105.11	STD	
		0.406	10.31	76.36	113.63		
		0.438	11.13	82.23	122.44		30
		0.469	11.91	87.89	130.79		
		0.500	12.70	93.54	139.22	XS	
		0.562	14.27	104.76	155.88		40
		0.625	15.88	116.09	172.83		
		0.688	17.48	127.32	189.56		
		0.750	19.05	138.30	205.84		60
		0.812	20.62	149.20	222.01		
		0.875	22.22	160.18	238.36		
		0.938	23.83	171.08	254.68		80

Size		Wall Thickness		Weight		Identification	
Nominal Diameter	Outside Diameter	inch	mm	lb/ft	kg/m	STD XS XXS	Schedule No.
inch mm	inch mm						
18 450	18.000 457.2	1.000	25.40	181.73	270.48		
		1.062	26.97	192.29	286.15		
		1.125	28.58	202.94	302.10		
		1.156	29.36	208.15	309.78		100
		1.188	30.18	213.51	317.82		
		1.250	31.75	223.82	333.13		
		1.375	34.92	244.37	363.66		120
		1.562	39.67	274.48	408.48		140
		1.781	45.24	308.79	459.62		160
20 500	20.000 508.0	0.188	4.78	39.82	59.32		
		0.203	5.16	42.96	64.01		
		0.219	5.56	46.31	68.89		
		0.250	6.35	52.78	78.56		10
		0.281	7.14	59.23	88.19		
		0.312	7.92	65.66	97.68		
		0.344	8.74	72.28	107.61		
		0.375	9.52	78.67	117.03	STD	20
		0.406	10.31	85.04	126.54		
		0.438	11.13	91.59	136.38		
		0.469	11.91	97.92	145.71		
		0.500	12.70	104.23	155.13	XS	30
		0.562	14.27	116.78	173.75		
		0.594	15.09	123.23	183.43		40
		0.625	15.88	129.45	192.73		
		0.688	17.48	142.03	211.45		
		0.750	19.05	154.34	229.71		
		0.812	20.62	166.56	247.84		60
		0.875	22.22	178.89	266.20		
		0.938	23.83	191.14	284.54		
1.000	25.40	203.11	302.30				
1.031	26.19	209.06	311.19		80		
1.062	26.97	215.00	319.94				
1.125	28.58	227.00	337.91				
1.188	30.18	238.91	355.63				
1.250	31.75	250.55	372.90				
1.281	32.54	256.34	381.55		100		
1.312	33.32	262.10	390.05				
1.375	34.92	273.76	407.41				
1.500	38.10	296.65	441.52		120		
1.750	44.45	341.41	508.15		140		
1.969	50.01	379.53	564.85		160		
22 550	22.000 558.8	0.188	4.78	43.84	65.31		
		0.203	5.16	47.30	70.48		
		0.219	5.56	50.99	75.86		
		0.250	6.35	58.13	86.51		10
		0.281	7.14	65.24	97.14		
		0.312	7.92	72.34	107.60		
		0.344	8.74	79.64	118.56		
		0.375	9.52	86.69	128.96	STD	20
		0.406	10.31	93.72	139.46		
		0.438	11.13	100.96	150.33		
		0.469	11.91	107.95	160.63		
		0.500	12.70	114.92	171.04	XS	30



Size		Wall Thickness		Weight		Identification			
Nominal Diameter	Outside Diameter	inch	mm	lb/ft	kg/m	STD	Schedule No.		
						XS		XXS	
inch	inch								
mm	mm								
22	22.000	550	558.8	0.562	14.27	128.79	191.63		
				0.625	15.88	142.81	212.62		
				0.688	17.48	156.74	233.35		
				0.750	19.05	170.37	253.58		
				0.812	20.62	183.92	273.68		
				0.875	22.22	197.60	294.03		60
				0.938	23.83	211.19	314.39		
				1.000	25.40	224.49	334.12		
				1.062	26.97	237.70	353.73		
				1.125	28.58	251.05	373.71		80
				1.188	30.18	264.31	393.44		
				1.250	31.75	277.27	412.68		
				1.312	33.32	290.15	431.80		
				1.375	34.92	303.16	451.15		100
				1.438	36.53	316.08	470.50		
1.500	38.10	328.72	489.25						
24	24.000	600	609.6	0.188	4.78	47.86	71.30		
				0.203	5.16	51.64	76.95		
				0.218	5.54	55.42	82.53		5
				0.250	6.35	63.47	94.47		10
				0.281	7.14	71.25	106.08		
				0.312	7.92	79.01	117.52		
				0.344	8.74	86.99	129.51		
				0.375	9.52	94.71	140.89	STD	20
				0.406	10.31	102.40	152.38		
				0.438	11.13	110.32	164.27		
				0.469	11.91	117.98	175.55		
				0.500	12.70	125.61	186.95	XS	
				0.562	14.27	140.81	209.51		30
				0.625	15.88	156.17	232.52		
				0.688	17.48	171.45	255.25		40
				0.750	19.05	186.41	277.44		
				0.812	20.62	201.28	299.51		
				0.875	22.22	216.31	321.87		
				0.938	23.83	231.25	344.25		
				0.969	24.61	238.57	355.04		60
				1.000	25.40	245.87	365.94		
				1.062	26.97	260.41	387.52		
				1.125	28.58	275.10	409.52		
				1.188	30.18	289.71	431.25		
1.219	30.96	296.86	441.80		80				
1.250	31.75	304.00	452.46						
1.312	33.32	318.21	473.54						
1.375	34.92	332.56	494.90						
1.438	36.53	346.83	516.27						
1.500	38.10	360.79	536.98						
1.531	38.89	367.74	547.36		100				
1.562	39.67	374.66	557.57						
1.812	46.02	429.79	639.62		120				
2.062	52.37	483.57	719.68		140				
2.344	59.54	542.64	807.68		160				
26	26.000								
650	660.4	0.250	6.35	68.82	102.42				

Stock Pipe

Size		Wall Thickness		Weight		Identification			
Nominal Diameter	Outside Diameter	inch	mm	lb/ft	kg/m	STD XS XXS	Schedule No.		
inch	mm								
26	26.000		0.281	7.14	77.26	115.03			
			0.312	7.92	85.68	127.44		10	
			0.344	8.74	94.35	140.46			
			0.375	9.52	102.72	152.81	STD		
			0.406	10.31	111.08	165.29			
			0.438	11.13	119.69	178.21			
			0.469	11.91	128.00	190.47			
			0.500	12.70	136.30	202.86	XS	20	
		650	660.4	0.562	14.27	152.83	227.39		
			0.625	15.88	169.54	252.41			
			0.688	17.48	186.16	277.15			
			0.750	19.05	202.44	301.31			
			0.812	20.62	218.64	325.34			
			0.875	22.22	235.01	349.71			
			0.938	23.83	251.30	374.10			
	1.000	25.40	267.25	397.77					
28	28.000		0.250	6.35	74.16	110.38			
			0.281	7.14	83.26	123.97			
			0.312	7.92	92.35	137.36		10	
			0.344	8.74	101.70	151.41			
			0.375	9.52	110.74	164.74	STD		
			0.406	10.31	119.76	178.21			
			0.438	11.13	129.05	192.16			
			0.469	11.91	138.03	205.39			
			0.500	12.70	146.99	218.77	XS	20	
		700	711.2	0.562	14.27	164.84	245.26		
			0.625	15.88	182.90	272.30		30	
			0.688	17.48	200.87	299.05			
			0.750	19.05	218.48	325.17			
			0.812	20.62	236.00	351.17			
			0.875	22.22	253.72	377.55			
	0.938	23.83	271.36	403.96					
	1.000	25.40	288.63	429.59					
30	30.000		0.250	6.35	79.51	118.34			
			0.281	7.14	89.27	132.92			
			0.312	7.92	99.02	147.29		10	
			0.344	8.74	109.06	162.36			
			0.375	9.52	118.76	176.67	STD		
			0.406	10.31	128.44	191.12			
			0.438	11.13	138.42	206.10			
			0.469	11.91	148.06	220.32			
			0.500	12.70	157.68	234.68	XS	20	
		750	762.0	0.562	14.27	176.86	263.14		
			0.625	15.88	196.26	292.20		30	
			0.688	17.48	215.58	320.95			
			0.750	19.05	234.51	349.04			
			0.812	20.62	253.36	377.01			
			0.875	22.22	272.43	405.38			
	0.938	23.83	291.41	433.81					
	1.000	25.40	310.01	461.41					
32	32.000		0.250	6.35	84.85	126.32			
			0.281	7.14	95.28	141.90			
			0.312	7.92	105.69	157.25		10	

Stock Pipe



Size		Wall Thickness		Weight		Identification			
Nominal Diameter	Outside Diameter	inch	mm	lb/ft	kg/m	STD	Schedule No.		
						XS		XXS	
inch	mm	inch	mm	lb/ft	kg/m				
32	32.000	800	813.0	0.344	8.74	116.41	173.35		
				0.375	9.52	126.78	188.64	STD	
				0.406	10.31	137.12	204.09		
				0.438	11.13	147.78	220.10		
				0.469	11.91	158.08	235.29		
				0.500	12.70	168.37	250.65	XS	20
				0.562	14.27	188.87	281.09		
				0.625	15.88	209.62	312.17		30
				0.688	17.48	230.29	342.94		40
				0.750	19.05	250.55	373.00		
				0.812	20.62	270.72	402.94		
				0.875	22.22	291.14	433.33		
				0.938	23.83	311.47	463.78		
				1.000	25.40	331.39	493.35		
34	34.000	850	864.0	0.250	6.35	90.20	134.31		
				0.281	7.14	101.29	150.88		
				0.312	7.92	112.36	167.21		10
				0.344	8.74	123.77	184.34		
				0.375	9.52	134.79	200.61	STD	
				0.406	10.31	145.80	217.06		
				0.438	11.13	157.14	234.10		
				0.469	11.91	168.11	250.27		
				0.500	12.70	179.06	266.63	XS	20
				0.562	14.27	200.89	299.04		
				0.625	15.88	222.99	332.14		30
				0.688	17.48	245.00	364.92		40
				0.750	19.05	266.58	396.96		
				0.875	22.22	309.84	461.28		
1.000	25.40	352.77	525.30						
36	36.000	900	914.0	0.250	6.35	95.54	142.14		
				0.281	7.14	107.30	159.68		
				0.312	7.92	119.03	176.97		10
				0.344	8.74	131.12	195.12		
				0.375	9.52	142.81	212.35	STD	
				0.406	10.31	154.48	229.77		
				0.438	11.13	166.51	247.82		
				0.469	11.91	178.14	264.96		
				0.500	12.70	189.75	282.29	XS	20
				0.562	14.27	212.90	316.63		
				0.625	15.88	236.35	351.73		30
				0.688	17.48	259.71	386.47		
				0.750	19.05	282.62	420.45		40
				0.875	22.22	328.55	488.68		
1.000	25.40	374.15	556.62						
38	38.000	950	965.0	0.250	6.35	100.89	150.32		
				0.312	7.92	125.70	186.94		
				0.344	8.74	138.47	206.11		
				0.375	9.52	150.83	224.33	STD	
				0.406	10.31	163.16	242.74		
				0.438	11.13	175.87	261.82		
				0.500	12.70	200.44	298.26	XS	
				0.625	15.88	249.71	371.70		

Size		Wall Thickness		Weight		Identification															
Nominal Diameter	Outside Diameter	inch	mm	lb/ft	kg/m	STD	Schedule No.														
						XS		XXS													
38	38.000	0.750	19.05	298.65	444.41																
						950	965.0	0.875	22.22	347.26	516.62										
								1.000	25.40	395.53	588.57										
40	40.000	0.250	6.35	106.23	158.29																
						1000	1016.0	0.312	7.92	132.37	196.90										
												0.344	8.74	145.83	217.11						
																0.375	9.52	158.85	236.30	STD	
																0.406	10.31	171.84	255.71		
																0.438	11.13	185.24	275.82		
																0.469	11.91	198.19	294.92		
																0.500	12.70	211.13	314.23	XS	
																0.625	15.88	263.07	391.67		
																0.750	19.05	314.69	468.37		
0.875	22.22	365.97	544.57																		
1.000	25.40	416.91	620.51																		
42	42.000	0.250	6.35	111.58	166.25																
						1050	1067.0	0.312	7.92	139.04	207.17										
												0.344	8.74	153.18	228.10						
																0.375	9.52	166.86	248.27	STD	
																0.406	10.31	180.52	268.67		
																0.438	11.13	194.60	289.82		
																0.469	11.91	208.22	309.90		
																0.500	12.70	221.82	330.21	XS	
																0.625	15.88	276.44	411.64		
																0.750	19.05	330.72	492.33		
0.875	22.22	384.67	527.52																		
1.000	25.40	438.29	652.46																		
48	48.000	0.250	6.35	127.61	190.14																
						1200	1219.0	0.312	7.92	159.05	236.99										
												0.344	8.74	175.25	260.86						
																0.375	9.52	190.92	283.96	STD	
																0.406	10.31	206.56	307.32		
																0.438	11.13	222.70	331.54		
																0.469	11.91	238.30	354.54		
																0.500	12.70	253.89	377.81	XS	
																0.625	15.88	316.52	471.17		
																0.750	19.05	378.83	563.74		
0.875	22.22	440.80	655.81																		
1.000	25.40	502.43	747.67																		
54	54.000	0.312	7.92	179.06	266.81																
						1350	1371.6	0.375	9.53	214.97	320.30	STD									
												0.438	11.13	250.79	373.68						
												0.500	12.70	285.96	426.08	XS					
												0.625	15.88	356.61	531.35						
												0.750	19.05	426.93	636.13						
												1.000	25.40	566.57	844.19						
												0.312	7.92	199.08	296.62						
												0.375	9.52	239.02	355.57	STD					
												0.438	11.13	278.88	415.26						
0.500	12.70	318.03	473.34	XS																	
0.625	15.88	396.70	590.62																		
0.750	19.05	475.04	707.03																		
1.000	25.40	630.71	938.73																		
60	60.000	0.438	11.13	278.88	415.26																
						1500	1524.0	0.500	12.70	318.03	473.34	XS									
												0.625	15.88	396.70	590.62						
												0.750	19.05	475.04	707.03						
												1.000	25.40	630.71	938.73						



WELDING NECK FLANGE



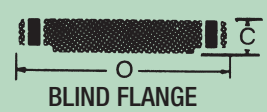
SLIP-ON FLANGE



THREADED FLANGE



LAP JOINT FLANGE



BLIND FLANGE

150 LB. FLANGES								300 LB. FLANGES						400 LB. FLANGES								
Nom. Pipe Size	O	C *Note 2	Y Weld Neck	Y Slip on Thrd	Y Lap Joint	Bolt Circle	No. and Size of Holes	O	C *Note 2	Y Weld Neck	Y Slip on Thrd	Y Lap Joint	Bolt Circle	No. and Size of Holes	O	C *Note 2	Y Weld Neck	Y Slip on Thrd	Y Lap Joint	Bolt Circle	No. and Size of Holes	Nom. Pipe Size
0.50	3.50	0.44	1.87	0.62	0.62	2.38	4 - 0.62	3.75	0.56	2.06	0.87	0.88	2.62	4 - 0.62	3.75	0.56	2.06	0.88	0.88	2.62	4 - 0.62	0.50
0.75	3.88	0.50	2.06	0.62	0.62	2.75	4 - 0.62	4.62	0.62	2.25	1.00	1.00	3.25	4 - 0.75	4.62	0.62	2.25	1.00	1.00	3.25	4 - 0.75	0.75
1.00	4.25	0.56	2.18	0.68	0.69	3.12	4 - 0.62	4.88	0.68	2.44	1.06	1.06	3.50	4 - 0.75	4.88	0.69	2.44	1.06	1.06	3.50	4 - 0.75	1.00
1.25	4.62	0.62	2.25	0.81	0.81	3.50	4 - 0.62	5.25	0.75	2.56	1.06	1.06	3.88	4 - 0.75	5.25	0.81	2.62	1.12	1.12	3.88	4 - 0.75	1.25
1.50	5.00	0.68	2.44	0.87	0.88	3.88	4 - 0.62	6.12	0.81	2.69	1.19	1.19	4.50	4 - 0.87	6.12	0.88	2.75	1.25	1.25	4.50	4 - 0.87	1.50
2.00	6.00	0.75	2.50	1.00	1.00	4.75	4 - 0.75	6.50	0.87	2.75	1.31	1.31	5.00	8 - 0.75	6.50	1.00	2.88	1.44	1.44	5.00	8 - 0.75	2.00
2.50	7.00	0.87	2.75	1.12	1.12	5.50	4 - 0.75	7.50	1.00	3.00	1.50	1.50	5.88	8 - 0.87	7.50	1.12	3.12	1.62	1.62	5.88	8 - 0.87	2.50
3.00	7.50	0.94	2.75	1.18	1.19	6.00	4 - 0.75	8.25	1.12	3.12	1.69	1.69	6.62	8 - 0.87	8.25	1.25	3.25	1.81	1.81	6.62	8 - 0.87	3.00
3.50	8.50	0.94	2.81	1.25	1.25	7.00	8 - 0.75	9.00	1.18	3.19	1.75	1.75	7.25	8 - 0.87	9.00	1.38	3.38	1.94	1.94	7.25	8 - 1.00	3.50
4.00	9.00	0.94	3.00	1.31	1.31	7.50	8 - 0.75	10.00	1.25	3.38	1.88	1.88	7.88	8 - 0.87	10.00	1.38	3.50	2.00	2.00	7.88	8 - 1.00	4.00
5.00	10.00	0.94	3.50	1.44	1.44	8.50	8 - 0.87	11.00	1.37	3.88	2.00	2.00	9.25	8 - 0.87	11.00	1.50	4.00	2.12	2.12	9.25	8 - 1.00	5.00
6.00	11.00	1.00	3.50	1.56	1.56	9.50	8 - 0.87	12.50	1.44	3.88	2.06	2.06	10.62	12 - 0.87	12.50	1.62	4.06	2.25	2.25	10.62	12 - 1.00	6.00
8.00	13.50	1.12	4.00	1.75	1.75	11.75	8 - 0.87	15.00	1.62	4.38	2.44	2.44	13.00	12 - 1.00	15.00	1.88	4.62	2.69	2.69	13.00	12 - 1.12	8.00
10.00	16.00	1.18	4.00	1.94	1.94	14.25	12 - 1.00	17.50	1.87	4.62	2.62	3.75	15.25	16 - 1.12	17.50	2.12	4.88	2.88	4.00	15.25	16 - 1.25	10.00
12.00	19.00	1.25	4.50	2.18	2.19	17.00	12 - 1.00	20.50	2.00	5.12	2.88	4.00	17.75	16 - 1.25	20.50	2.25	5.38	3.12	4.25	17.75	16 - 1.37	12.00
14.00	21.00	1.37	5.00	2.25	3.12	18.75	12 - 1.12	23.00	2.12	5.62	3.00	4.38	20.25	20 - 1.25	23.00	2.38	5.88	3.31	4.62	20.25	20 - 1.37	14.00
16.00	23.50	1.44	5.00	2.50	3.44	21.25	16 - 1.12	25.50	2.25	5.75	3.25	4.75	22.50	20 - 1.37	25.50	2.50	6.00	3.69	5.00	22.50	20 - 1.50	16.00
18.00	25.00	1.56	5.50	2.68	3.81	22.75	16 - 1.25	28.00	2.37	6.25	3.50	5.12	24.75	24 - 1.37	28.00	2.62	6.50	3.88	5.38	24.75	24 - 1.50	18.00
20.00	27.50	1.68	5.68	2.87	4.06	25.00	20 - 1.25	30.50	2.50	6.38	3.75	5.50	27.00	24 - 1.37	30.50	2.75	6.62	4.00	5.75	27.00	24 - 1.62	20.00
24.00	32.00	1.87	6.00	3.25	4.38	29.50	20 - 1.37	36.00	2.75	6.62	4.19	6.00	32.00	24 - 1.62	36.00	3.00	6.88	4.50	6.25	32.00	24 - 1.87	24.00
600 LB. FLANGES								900 LB. FLANGES						1500 LB. FLANGES								
0.50	3.75	0.56	2.06	0.88	0.88	2.62	4 - 0.62	4.75	0.88	2.38	1.25	1.25	3.25	4 - 0.87	4.75	0.88	2.38	1.25	1.25	3.25	4 - 0.87	0.50
0.75	4.62	0.62	2.25	1.00	1.00	3.25	4 - 0.75	5.12	1.00	2.75	1.38	1.38	3.50	4 - 0.87	5.12	1.00	2.75	1.38	1.38	3.50	4 - 0.87	0.75
1.00	4.88	0.69	2.44	1.06	1.06	3.50	4 - 0.75	5.88	1.12	2.88	1.62	1.62	4.00	4 - 1.00	5.88	1.12	2.88	1.62	1.62	4.00	4 - 1.00	1.00
1.25	5.25	0.81	2.62	1.12	1.12	3.88	4 - 0.75	6.25	1.12	2.88	1.62	1.62	4.38	4 - 1.00	6.25	1.12	2.88	1.62	1.62	4.38	4 - 1.00	1.25
1.50	6.12	0.88	2.75	1.25	1.25	4.50	4 - 0.87	7.00	1.25	3.25	1.75	1.75	4.88	4 - 1.12	7.00	1.25	3.25	1.75	1.75	4.88	4 - 1.12	1.50
2.00	6.50	1.00	2.88	1.44	1.44	5.00	8 - 0.75	8.50	1.50	4.00	2.25	2.25	6.50	8 - 1.00	8.50	1.50	4.00	2.25	2.25	6.50	8 - 1.00	2.00

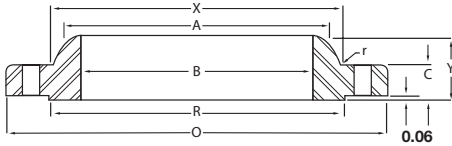
2.50	7.50	1.12	3.12	1.62	1.62	5.88	8 - 0.87	9.62	1.62	4.12	2.50	2.50	7.50	8 - 1.12	9.62	1.62	4.12	2.50	2.50	7.50	8 - 1.12	2.50
3.00	8.25	1.25	3.25	1.81	1.81	6.62	8 - 0.87	9.50	1.50	4.00	2.12	2.12	7.50	8 - 1.00	10.50	1.88	4.62	--	2.88	8.00	8 - 1.25	3.00
3.50	9.00	1.38	3.38	1.94	1.94	7.25	8 - 1.00	--	--	--	--	--	--	--	--	--	--	--	--	--	--	3.50
4.00	10.75	1.50	4.00	2.12	2.12	8.50	8 - 1.00	11.50	1.75	4.50	2.75	2.75	9.25	8 - 1.25	12.25	2.12	4.88	--	3.56	9.50	8 - 1.37	4.00
5.00	13.00	1.75	4.50	2.38	2.38	10.50	8 - 1.12	13.75	2.00	5.00	3.12	3.12	11.00	8 - 1.37	14.75	2.88	6.12	--	4.12	11.50	8 - 1.62	5.00
6.00	14.00	1.88	4.62	2.62	2.62	11.50	12 - 1.12	15.00	2.19	5.50	3.38	3.38	12.50	12 - 1.25	15.50	3.25	6.75	--	4.69	12.50	12 - 1.50	6.00
8.00	16.50	2.19	5.25	3.00	3.00	13.75	12 - 1.25	18.50	2.50	6.38	4.00	4.50	15.50	12 - 1.50	19.00	3.62	8.38	--	5.62	15.50	12 - 1.75	8.00
10.00	20.00	2.50	6.00	3.38	4.38	17.00	16 - 1.37	21.50	2.75	7.25	4.25	5.00	18.50	16 - 1.50	23.00	4.25	10.00	--	7.00	19.00	12 - 2.00	10.00
12.00	22.00	2.62	6.12	3.62	4.62	19.25	20 - 1.37	24.00	3.12	7.88	4.62	5.62	21.00	20 - 1.50	26.50	4.88	11.12	--	8.62	22.50	16 - 2.12	12.00
14.00	23.75	2.75	6.50	3.69	5.00	20.75	20 - 1.50	25.25	3.38	8.38	5.12	6.12	22.00	20 - 1.62	29.50	5.25	11.75	--	9.50	25.00	16 - 2.37	14.00
16.00	27.00	3.00	7.00	4.19	5.50	23.75	20 - 1.62	27.75	3.50	8.50	5.25	6.50	24.25	20 - 1.75	32.50	5.75	12.25	--	10.25	27.75	16 - 2.62	16.00
18.00	29.25	3.25	7.25	4.62	6.00	25.75	20 - 1.75	31.00	4.00	9.00	6.00	7.50	27.00	20 - 2.00	36.00	6.38	12.88	--	10.88	30.50	16 - 2.87	18.00
20.00	32.00	3.50	7.50	5.00	6.50	28.50	24 - 1.75	33.75	4.25	9.75	6.25	8.25	29.50	20 - 2.12	38.75	7.00	14.00	--	11.50	32.75	16 - 3.12	20.00
24.00	37.00	4.00	8.00	5.50	7.25	33.00	24 - 2.00	41.00	5.50	11.50	8.00	10.50	35.50	20 - 2.62	46.00	8.00	16.00	--	13.00	39.00	16 - 3.62	24.00

2500 LB. FLANGES

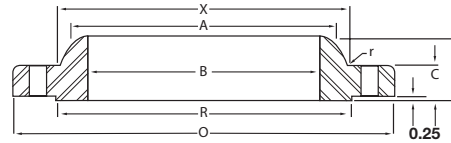
WELDING NECK FLANGE BORES

2500 LB. FLANGES								WELDING NECK FLANGE BORES														
0.50	0.75	1.00	1.25	1.50	2.00	2.50	3.00	Nom. Pipe Size	Outside Diam.	Light Wall	Sch. 20	Sch. 30	STD	Sch. 40	Sch. 60	XS	Sch. 80	Sch. 100	Sch. 120	Sch. 140	Sch. 160	XXS
0.50	0.75	1.00	1.25	1.50	2.00	2.50	3.00	0.50	0.84	0.67	--	--	0.62	0.62	--	0.55	0.55	--	--	--	0.46	0.25
0.75	1.00	1.25	1.50	2.00	2.50	3.00	3.50	0.75	1.05	0.88	--	--	0.82	0.82	--	0.74	0.74	--	--	--	0.61	0.43
1.00	1.25	1.50	2.00	2.50	3.00	3.50	4.00	1.00	1.32	1.10	--	--	1.05	1.05	--	0.96	0.96	--	--	--	0.82	0.60
1.25	1.50	2.00	2.50	3.00	3.50	4.00	4.50	1.25	1.66	1.44	--	--	1.38	1.38	--	1.28	1.28	--	--	--	1.16	0.90
1.50	2.00	2.50	3.00	3.50	4.00	4.50	5.00	1.50	1.90	1.68	--	--	1.61	1.61	--	1.50	1.50	--	--	--	1.34	1.10
2.00	2.50	3.00	3.50	4.00	4.50	5.00	5.50	2.00	2.38	2.16	--	--	2.07	2.07	--	1.94	1.94	--	--	--	1.69	1.50
2.50	3.00	3.50	4.00	4.50	5.00	5.50	6.00	2.50	2.88	2.64	--	--	2.47	2.47	--	2.32	2.32	--	--	--	2.13	1.77
3.00	3.50	4.00	4.50	5.00	5.50	6.00	6.50	3.00	3.50	3.26	--	--	3.07	3.07	--	2.90	2.90	--	--	--	2.62	2.30
4.00	4.50	5.00	5.50	6.00	6.50	7.00	7.50	3.50	4.00	3.76	--	--	3.55	3.55	--	3.36	3.36	--	--	--	--	2.73
5.00	5.50	6.00	6.50	7.00	7.50	8.00	8.50	4.00	4.50	4.26	--	--	4.03	4.03	--	3.83	3.83	--	3.62	--	3.44	3.15
6.00	6.50	7.00	7.50	8.00	8.50	9.00	9.50	5.00	5.56	5.30	--	--	5.05	5.05	--	4.81	4.81	--	4.56	--	4.31	4.06
8.00	8.50	9.00	9.50	10.00	10.50	11.00	11.50	6.00	6.63	6.36	--	--	6.07	6.07	--	5.76	5.76	--	5.50	--	5.19	4.90
10.00	10.50	11.00	11.50	12.00	12.50	13.00	13.50	8.00	8.63	8.33	8.13	8.07	7.98	7.98	7.81	7.63	7.63	7.44	7.19	7.00	6.81	6.88
12.00	12.50	13.00	13.50	14.00	14.50	15.00	15.50	10.00	10.75	10.42	10.25	10.14	10.02	10.02	9.75	9.75	9.56	9.31	9.06	8.75	8.50	8.75
14.00	14.50	15.00	15.50	16.00	16.50	17.00	17.50	12.00	12.75	12.39	12.25	12.09	12.00	11.94	11.63	11.75	11.37	11.06	10.75	10.50	10.13	10.75
16.00	16.50	17.00	17.50	18.00	18.50	19.00	19.50	14.00	14.00	13.50	13.38	13.25	13.25	13.12	12.81	13.00	12.50	12.12	11.81	11.50	11.18	--
18.00	18.50	19.00	19.50	20.00	20.50	21.00	21.50	16.00	16.00	15.50	15.38	15.25	15.25	15.00	14.69	15.00	14.31	13.94	13.56	13.12	12.81	--
20.00	20.50	21.00	21.50	22.00	22.50	23.00	23.50	18.00	18.00	17.50	17.37	17.12	17.25	16.88	16.50	17.00	16.12	15.69	15.25	14.88	14.44	--
24.00	24.50	25.00	25.50	26.00	26.50	27.00	27.50	20.00	20.00	19.50	19.25	19.00	19.25	18.81	18.38	19.00	17.94	17.44	17.00	16.50	16.06	--
30.00	30.50	31.00	31.50	32.00	32.50	33.00	33.50	24.00	24.00	23.50	23.25	22.88	23.25	22.62	22.06	23.00	21.56	20.94	20.38	19.88	19.31	--
36.00	36.50	37.00	37.50	38.00	38.50	39.00	39.50	30.00	30.00	29.38	29.00	28.75	29.25	--	--	29.00	--	--	--	--	--	--
42.00	42.50	43.00	43.50	44.00	44.50	45.00	45.50	36.00	36.00	35.38	35.00	34.75	35.25	34.50	--	35.00	--	--	--	--	--	--
								42.00	42.00	--	41.00	40.75	41.25	40.50	--	41.00	--	--	--	--	--	--

- *NOTES:**
- Always specify bore when ordering.
 - Includes 1/16" raised face for 150 lb. and 300 lb. Does not include 1/4" raised face for 400 lb. and greater ANSI rated Flanges.
 - Inside pipe diameters are also provided by this table.
 - Other types, sizes and facings on application.
 - Stocked in carbon steel.



WELDING NECK FLANGE 150 LB. AND 300 LB.



WELDING NECK FLANGE 400 LB. AND GREATER

150 LB. FLANGES (B16.47 SERIES A) *Welding Neck Flanges only.

Nominal Pipe Size	O.D. of Flange	Thickness of Flange, Min.		Length Through Hub	Diam. of Hub	Hub Diam. Top	Raised Face Diam.	Drilling			Diam. of Bolt	Fillet Radius Min.	Approx. Weight (Lbs.)	
		WNF	BLIND					Diam. of Bolt Circle	No. of Bolt Holes	Diam. of Bolt Hole			Welding Neck	Blind
26	34.25	2.69	2.69	4.75	26.62	26.00	29.50	31.75	24	1.37	1.25	0.38	300	670
28	36.50	2.81	2.81	4.94	28.62	28.00	31.50	34.00	28	1.37	1.25	0.44	345	795
30	38.75	2.94	2.94	5.38	30.75	30.00	33.75	36.00	28	1.37	1.25	0.44	400	940
32	41.75	3.19	3.19	5.69	32.75	32.00	36.00	38.50	28	1.62	1.50	0.44	505	1175
34	43.75	3.25	3.25	5.88	34.75	34.00	38.00	40.50	32	1.62	1.50	0.50	540	1315
36	46.00	3.56	3.56	6.19	36.75	36.00	40.25	42.75	32	1.62	1.50	0.50	640	1590
38	48.75	3.44	3.44	6.19	39.00	38.00	42.25	45.25	32	1.62	1.50	0.50	720	1740
40	50.75	3.56	3.56	6.44	41.00	40.00	44.25	47.25	36	1.62	1.50	0.50	775	1955
42	53.00	3.81	3.81	6.75	43.00	42.00	47.00	49.50	36	1.62	1.50	0.50	890	2290
44	55.25	4.00	4.00	7.00	45.00	44.00	49.00	51.75	40	1.62	1.50	0.50	990	2790
46	57.25	4.06	4.06	7.31	47.12	46.00	51.00	53.75	40	1.62	1.50	0.50	1060	3050
48	59.50	4.25	4.25	7.56	49.12	48.00	53.50	56.00	44	1.62	1.50	0.50	1185	3220
50	61.75	4.38	4.38	8.00	51.25	50.00	55.50	58.25	44	1.87	1.75	0.50	1270	3545
52	64.00	4.56	4.56	8.25	53.25	52.00	57.50	60.50	44	1.87	1.75	0.50	1410	3990
54	66.25	4.75	4.75	8.50	55.25	54.00	59.50	62.75	44	1.87	1.75	0.50	1585	4455
56	68.75	4.88	4.88	9.00	57.38	56.00	62.00	65.00	48	1.87	1.75	0.50	1760	4920
58	71.00	5.06	5.06	9.25	59.38	58.00	64.00	67.25	48	1.87	1.75	0.50	1915	5465
60	73.00	5.19	5.19	9.44	61.38	60.00	66.00	69.25	52	1.87	1.75	0.50	2045	5800

300 LB. FLANGES (B16.47 SERIES A) *Welding Neck Flanges only.

Nominal Pipe Size	O.D. of Flange	Thickness of Flange, Min.		Length Through Hub	Diam. of Hub	Hub Diam. Top	Raised Face Diam.	Drilling			Diam. of Bolt	Fillet Radius Min.	Approx. Weight (Lbs.)	
		WNF	BLIND					Diam. of Bolt Circle	No. of Bolt Holes	Diam. of Bolt Hole			Welding Neck	Blind
26	38.25	3.13	3.31	7.25	28.38	26.00	29.50	34.50	28	1.75	1.62	0.38	605	1010
28	40.75	3.38	3.56	7.75	30.50	28.00	31.50	37.00	28	1.75	1.62	0.44	745	1240
30	43.00	3.63	3.75	8.25	32.56	30.00	33.75	39.25	28	1.87	1.75	0.44	870	1450
32	45.25	3.88	3.94	8.75	34.69	32.00	36.00	41.50	28	2.00	1.87	0.44	1005	1685
34	47.50	4.00	4.13	9.13	36.88	34.00	38.00	43.50	28	2.00	1.87	0.50	1145	1915
36	50.00	4.13	4.38	9.50	39.00	36.00	40.25	46.00	32	2.12	2.00	0.50	1275	2280
38	46.00	4.25	4.25	7.12	39.12	38.00	40.50	43.00	32	1.62	1.50	0.50	695	1910
40	48.75	4.50	4.50	7.62	41.25	40.00	42.75	45.50	32	1.75	1.62	0.50	840	2270
42	50.75	4.69	4.69	7.88	43.25	42.00	44.75	47.50	32	1.75	1.62	0.50	950	2570
44	53.25	4.88	4.88	8.12	45.25	44.00	47.00	49.75	32	1.87	1.75	0.50	1055	2940
46	55.75	5.06	5.06	8.50	47.38	46.00	49.00	52.00	28	2.00	1.87	0.50	1235	3370
48	57.75	5.25	5.25	8.81	49.38	48.00	51.25	54.00	32	2.00	1.87	0.50	1380	3740
50	60.25	5.50	5.50	9.13	51.38	50.00	53.50	56.25	32	2.12	2.00	0.50	1530	4270
52	62.25	5.69	5.69	9.38	53.38	52.00	55.50	58.25	32	2.12	2.00	0.50	1660	4715
54	65.25	6.00	6.00	9.94	55.50	54.00	57.75	61.00	28	2.37	2.25	0.50	2050	5460
56	67.25	6.06	6.06	10.25	57.62	56.00	59.75	63.00	28	2.37	2.25	0.50	2155	5870
58	69.25	6.25	6.25	10.50	59.62	58.00	62.00	65.00	32	2.37	2.25	0.50	2270	6400
60	71.25	6.44	6.44	10.75	61.62	60.00	64.00	67.00	32	2.37	2.25	0.50	2470	7000

400 LB. FLANGES (B16.47 SERIES A) *Welding Neck Flanges only.

Nominal Pipe Size	O.D. of Flange	Thickness of Flange, Min.		Length Through Hub	Diam. of Hub	Hub Diam. Top	Raised Face Diam.	Drilling			Diam. of Bolt	Fillet Radius Min.	Approx. Weight (Lbs.)	
		WNF	BLIND					Diam. of Bolt Circle	No. of Bolt Holes	Diam. of Bolt Hole			Welding Neck	Blind
26	38.25	3.50	3.88	7.62	28.62	26.00	29.50	34.50	28	1.87	1.75	0.44	650	1225
28	40.75	3.75	4.12	8.12	30.81	28.00	31.50	37.00	28	2.00	1.87	0.50	785	1470
30	43.00	4.00	4.38	8.62	32.94	30.00	33.75	39.25	28	2.12	2.00	0.50	905	1740
32	45.25	4.25	4.56	9.12	35.00	32.00	36.00	41.50	28	2.12	2.00	0.50	1065	2020

600 LB. FLANGES (B16.47 SERIES A) *Welding Neck Flanges only.

Nominal Pipe Size	O.D. of Flange	Thickness of Flange, Min.		Length Through Hub	Diam. of Hub	Hub Diam. Top	Raised Face Diam.	Drilling			Diam. of Bolt	Fillet Radius Min.	Approx. Weight (Lbs.)	
		WNF	BLIND					Diam. of Bolt Circle	No. of Bolt Holes	Diam. of Bolt Hole			Welding Neck	Blind
26	40.00	4.25	4.94	8.75	29.44	26.00	29.50	36.00	28	2.00	1.87	0.50	940	1680
28	42.25	4.38	5.19	9.25	31.62	28.00	31.50	38.00	28	2.12	2.00	0.50	1060	1970
30	44.50	4.50	5.50	9.75	33.94	30.00	33.75	40.25	28	2.12	2.00	0.50	1210	2423
32	47.00	4.62	5.81	10.25	36.12	32.00	36.00	42.50	28	2.37	2.25	0.50	1375	2575

34	47.50	4.38	4.81	9.50	37.19	34.00	38.00	43.50	28	2.12	2.00	0.56	1200	2355
36	50.00	4.50	5.06	9.88	39.38	36.00	40.25	46.00	32	2.12	2.00	0.56	1340	2735
38	47.50	4.88	4.88	8.12	39.50	38.00	40.75	44.00	32	1.87	1.75	0.56	935	2415
40	50.00	5.12	5.12	8.50	41.50	40.00	43.00	46.25	32	2.00	1.87	0.56	1090	2800
42	52.00	5.25	5.25	8.81	43.62	42.00	45.00	48.25	32	2.00	1.87	0.56	1190	3115
44	54.50	5.50	5.50	9.18	45.62	44.00	47.25	50.50	32	2.12	2.00	0.56	1375	3575
46	56.75	5.75	5.75	9.62	47.75	46.00	49.50	52.75	36	2.12	2.00	0.56	1525	4040
48	59.50	6.00	6.00	10.12	49.88	48.00	51.50	55.25	28	2.37	2.25	0.56	1790	4655
50	61.75	6.19	6.25	10.56	52.00	50.00	53.62	57.50	32	2.37	2.25	0.56	1950	4880
52	63.75	6.38	6.44	10.88	54.00	52.00	55.62	59.50	32	2.37	2.25	0.56	2125	5720
54	67.00	6.69	6.75	11.38	56.12	54.00	57.88	62.25	28	2.62	2.50	0.56	2565	6625
56	69.00	6.88	6.94	11.75	58.25	56.00	60.12	64.25	32	2.62	2.50	0.56	2710	6800
58	71.00	7.00	7.12	12.06	60.25	58.00	62.12	66.25	32	2.62	2.50	0.56	3230	7850
60	73.00	5.19	5.19	9.44	61.38	60.00	66.00	69.25	52	1.87	1.75	0.50	2045	5800

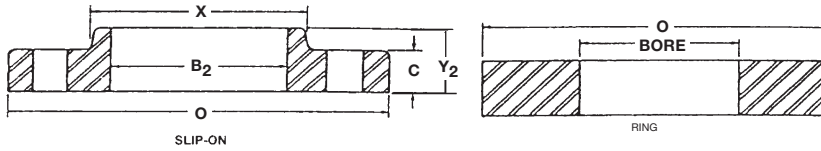
34	49.00	4.75	6.06	10.62	38.31	34.00	38.00	44.50	28	2.37	2.25	0.56	1540	3100
36	51.75	4.88	6.38	11.12	40.62	36.00	40.25	47.00	28	2.62	2.50	0.56	1705	3610
38	50.00	6.00	6.12	10.00	40.25	38.00	41.50	45.75	28	2.37	2.25	0.56	1470	3280
40	52.00	6.25	6.38	10.38	42.25	40.00	43.75	47.75	32	2.37	2.25	0.56	1630	3680
42	55.25	6.62	6.75	11.00	44.38	42.00	46.00	50.50	28	2.62	2.50	0.56	2030	4400
44	57.25	6.81	7.00	11.38	46.50	44.00	48.25	52.50	32	2.62	2.50	0.56	2160	4885
46	59.50	7.06	7.31	11.81	48.62	46.00	50.25	54.75	32	2.62	2.50	0.56	2410	5530
48	62.75	7.44	7.69	12.44	50.75	48.00	52.50	57.50	32	2.87	2.75	0.56	2855	6425
50	65.75	7.75	8.00	12.94	52.88	50.00	54.50	60.00	28	3.12	3.00	0.56	3330	7360
52	67.75	8.00	8.25	13.25	54.88	52.00	56.50	62.00	32	3.12	3.00	0.56	3560	8015
54	70.00	8.25	8.56	13.75	57.00	54.00	58.75	64.25	32	3.12	3.00	0.56	3920	8915
56	73.00	8.56	8.88	14.25	59.12	56.00	60.75	66.75	32	3.37	3.25	0.62	4280	10000
58	75.00	8.75	9.12	14.56	61.12	58.00	63.00	68.75	32	3.37	3.25	0.62	4640	10880
60	78.50	9.19	9.56	15.31	63.38	60.00	65.25	71.75	28	3.62	3.50	0.69	5000	12030

900 LB. FLANGES (B16.47 SERIES A) *Welding Neck Flanges only.														
Nominal Pipe Size	O.D. of Flange	Thickness of Flange, Min.		Length Through Hub	Diam. of Hub	Hub Diam. Top	Raised Face Diam.	Drilling				Approx. Weight (Lbs.)		
		WNF	BLIND					Diam. of Bolt Circle	No. of Bolt Holes	Diam. of Bolt Hole	Diam. of Bolt	Fillet Radius Min.	Approx. Weight (Lbs.)	
													Welding Neck	Blind
O	C	C	Y	X	A	R	r							
26	42.75	5.50	6.31	11.25	30.50	26.00	29.50	37.50	20	2.87	2.75	0.44	1525	2400
28	46.00	5.62	6.75	11.75	32.75	28.00	31.50	40.25	20	3.12	3.00	0.50	1810	2945
30	48.50	5.88	7.18	12.25	35.00	30.00	33.75	42.75	20	3.12	3.00	0.50	2120	3500
32	51.75	6.25	7.62	13.00	37.25	32.00	36.00	45.50	20	3.37	3.25	0.50	2545	4230
34	55.00	6.50	8.06	13.75	39.62	34.00	38.00	48.25	20	3.62	3.50	0.56	2970	5030
36	57.50	6.75	8.44	14.25	41.88	36.00	40.25	50.75	20	3.62	3.50	0.56	3395	5800
38	57.50	7.50	8.50	13.88	42.25	38.00	43.25	50.75	20	3.62	3.50	0.75	3385	5825
40	59.50	7.75	8.81	14.31	44.38	40.00	45.75	52.75	24	3.62	3.50	0.81	3620	6390
42	61.50	8.12	9.12	14.62	46.31	42.00	47.75	54.75	24	3.62	3.50	0.81	3960	7110
44	64.88	8.44	9.56	15.38	48.62	44.00	50.00	57.62	24	3.87	3.75	0.88	4300	8265
46	68.25	8.88	10.06	16.18	50.88	46.00	52.50	60.50	24	4.12	4.00	0.88	4640	10345
48	70.25	9.19	10.38	16.50	52.88	48.00	54.50	62.50	24	4.12	4.00	0.94	4980	10600
50	--	--	--	--	--	--	--	--	--	--	--	--	--	--
52	--	--	--	--	--	--	--	--	--	--	--	--	--	--
54	--	--	--	--	--	--	--	--	--	--	--	--	--	--
56	--	--	--	--	--	--	--	--	--	--	--	--	--	--
58	--	--	--	--	--	--	--	--	--	--	--	--	--	--
60	--	--	--	--	--	--	--	--	--	--	--	--	--	--

150 LB. FLANGES (B16.47 SERIES B) *Welding Neck Flanges only.														
Nominal Pipe Size	O.D. of Flange	Thickness of Flange, Min.		Length Through Hub	Diam. of Hub	Hub Diam. Top	Raised Face Diam.	Drilling				Approx. Weight (Lbs.)		
		WNF	BLIND					Diam. of Bolt Circle	No. of Bolt Holes	Diam. of Bolt Hole	Diam. of Bolt	Fillet Radius Min.	Approx. Weight (Lbs.)	
													Welding Neck	Blind
O	C	C	Y	X	A	R	r							
26	30.94	1.63	3.44	26.94	26.06	28.00	29.31	36	0.87	0.75	0.38	120		
28	32.94	1.75	3.69	28.94	28.06	30.00	31.31	40	0.87	0.75	0.38	140		
30	34.94	1.75	3.88	31.00	30.06	32.00	33.31	44	0.87	0.75	0.38	150		
32	37.06	1.81	4.19	33.06	32.06	34.00	35.44	48	0.87	0.75	0.38	170		
34	39.56	1.94	4.28	35.12	34.06	36.25	37.69	40	1.00	0.87	0.38	210		
36	41.62	2.06	4.57	37.19	36.06	38.25	39.75	44	1.00	0.87	0.38	240		
38	44.25	2.13	4.82	39.25	38.12	40.25	42.12	40	1.12	1.00	0.38	290		
40	46.25	2.19	5.00	41.31	40.12	42.50	44.12	44	1.12	1.00	0.38	310		
42	48.25	2.31	5.19	43.38	42.12	44.50	46.12	48	1.12	1.00	0.44	345		
44	50.25	2.38	5.32	45.38	44.12	46.50	48.12	52	1.12	1.00	0.44	370		
46	52.81	2.44	5.63	47.44	46.12	48.62	50.56	40	1.25	1.12	0.44	435		
48	54.81	2.56	5.82	49.50	48.12	50.75	52.56	44	1.25	1.12	0.44	480		
50	56.81	2.69	6.00	51.50	50.12	52.75	54.56	48	1.25	1.12	0.44	520		
52	58.81	2.75	6.13	53.56	52.12	54.75	56.56	52	1.25	1.12	0.44	550		
54	61.00	2.81	6.32	55.62	54.12	56.75	58.75	56	1.25	1.12	0.44	620		
56	63.00	2.88	6.50	57.69	56.12	58.75	60.75	60	1.25	1.12	0.56	650		
58	65.94	2.94	6.82	59.69	58.12	60.75	63.44	48	1.37	1.25	0.56	780		
60	67.94	3.00	7.00	61.81	60.12	63.00	65.44	52	1.37	1.25	0.56	850		

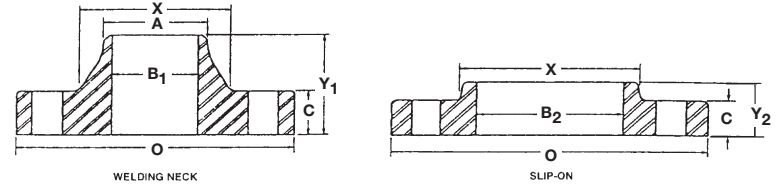
46	--	--	--	--	--	--	--	--	--	--	--	--
48	--	--	--	--	--	--	--	--	--	--	--	--
50	--	--	--	--	--	--	--	--	--	--	--	--
52	--	--	--	--	--	--	--	--	--	--	--	--
54	--	--	--	--	--	--	--	--	--	--	--	--
56	--	--	--	--	--	--	--	--	--	--	--	--
58	--	--	--	--	--	--	--	--	--	--	--	--
60	--	--	--	--	--	--	--	--	--	--	--	--

NOTES: Dimensions for Classes 400, 600, and 900 NPS 38 and larger for Series B Flanges are the same as Series A Flanges.



46	--	--	--	--	--	--	--	--	--	--	--	--
48	--	--	--	--	--	--	--	--	--	--	--	--
50	--	--	--	--	--	--	--	--	--	--	--	--
52	--	--	--	--	--	--	--	--	--	--	--	--
54	--	--	--	--	--	--	--	--	--	--	--	--
56	--	--	--	--	--	--	--	--	--	--	--	--
58	--	--	--	--	--	--	--	--	--	--	--	--
60	--	--	--	--	--	--	--	--	--	--	--	--

NOTES: Dimensions for Classes 400, 600, and 900 NPS 38 and larger for Series B Flanges are the same as Series A Flanges.



CLASS 125 LW & AWWA C207 CLASSES B, D												
Nominal Pipe Size	Outside Diameter	Thickness C			Hub Dia. X	Bore	Length Through Hub Y	Drilling				Weight 125 LW (Lbs.)
		Slip-On 125 LW B, D	Ring B	D				Bolt Circle	B	125 LW D	Number of Holes	
26	34.25	1.00	0.81	1.31	28.50	26.25	1.75	31.75	0.88	1.38	24	125
28	36.50	1.00	0.88	1.31	30.50	28.25	1.75	34.00	0.88	1.38	28	140
30	38.75	1.00	0.88	1.38	32.50	30.25	1.75	36.00	1.00	1.38	28	150
32	41.75	1.13	0.94	1.50	34.75	32.25	1.75	38.50	1.00	1.63	28	205
34	43.75	1.13	0.94	1.50	36.75	34.25	1.75	40.50	1.00	1.63	32	215
36	46.00	1.13	1.00	1.63	38.75	36.25	1.75	42.75	1.00	1.63	32	235
38	48.75	1.13	1.00	1.63	40.75	38.25	1.75	45.25	1.00	1.63	32	265
40	50.75	1.13	1.00	1.63	43.00	40.25	1.75	47.25	1.00	1.63	36	280
42	53.00	1.25	1.13	1.75	45.00	42.25	1.75	49.50	1.13	1.63	36	330
44	55.25	1.25	1.13	1.75	47.00	44.25	2.25	51.75	1.13	1.63	40	350
46	57.25	1.25	1.13	1.75	49.00	46.25	2.25	53.75	1.13	1.63	40	365
48	59.50	1.38	1.25	1.75	51.00	48.25	2.50	56.00	1.13	1.63	44	425
50	61.75	1.38	1.25	2.00	53.00	50.25	2.50	58.25	1.25	1.88	44	450
52	64.00	1.38	1.25	2.00	55.00	52.25	2.50	60.50	1.25	1.88	44	475
54	66.25	1.38	1.33	2.13	57.00	54.25	2.50	62.75	1.38	1.88	44	500
60	73.00	1.50	1.50	2.25	63.00	60.25	2.75	69.25	1.38	1.88	52	640
66	80.00	1.50	1.63	2.50	69.00	66.25	2.75	76.00	1.38	1.88	52	750
72	86.50	1.50	1.75	2.63	75.00	72.25	2.75	82.50	1.38	1.88	60	850
84	99.75	1.75	2.00	2.75	87.50	84.25	3.00	95.50	1.63	2.13	64	1225
96	113.25	2.00	2.25	3.00	100.00	96.25	3.25	108.50	1.88	2.38	68	1725

NOTES: Blind Flanges will be furnished to thickness listed above unless otherwise specified.

CLASS 125 & AWWA C207 CLASS E															
Nominal Pipe Size	Outside Diameter		Thickness	Hub Dia.	Bore		Length Through Hub			Diam. Hub at Bevel "A"	Drilling			Approx. Weight (Lbs.)	
	O	C			X	Welding Neck B ₁	Slip-On B ₂	Slip-On Y ₂	Welding Neck Y ₁		Bolt Circle	Diam. of Holes	Number of Holes	Welding Neck	Slip-On
26	34.25	2.00	28.50	26.25	3.75	3.38	5.00	26.00	31.75	1.38	24	265	235		
28	36.50	2.06	30.75	28.25	3.44	5.06	28.00	34.00	1.38	28	295	270			
30	38.75	2.13	32.75	30.25	3.50	5.13	30.00	36.00	1.38	28	340	305			
32	41.75	2.25	35.00	32.25	3.63	5.25	32.00	38.50	1.63	28	410	375			
34	43.75	2.31	37.00	34.25	3.68	5.31	34.00	40.50	1.63	32	440	400			
36	46.00	2.38	39.25	36.25	3.75	5.38	36.00	42.75	1.63	32	495	450			
38	48.75	2.38	41.75	38.25	3.75	5.38	38.00	45.25	1.63	32	570	530			
40	50.75	2.50	43.75	40.25	3.88	5.50	40.00	47.25	1.63	36	620	570			
42	53.00	2.63	46.00	42.25	4.00	5.63	42.00	49.50	1.63	36	710	650			
44	55.25	2.63	48.00	44.25	4.00	5.63	44.00	51.75	1.63	40	750	690			
46	57.25	2.68	50.00	46.25	4.06	5.68	46.00	53.75	1.63	40	800	730			
48	59.50	2.75	52.25	48.25	4.13	5.75	48.00	56.00	1.63	44	870	800			
50	61.75	2.75	54.25	50.25	4.13	5.75	50.00	58.25	1.88	44	900	830			
52	64.00	2.88	56.50	52.25	4.25	5.88	52.00	60.50	1.88	44	1000	920			
54	66.25	3.00	58.75	54.25	4.38	6.00	54.00	62.75	1.88	44	1100	1025			
60	73.00	3.13	65.25	60.25	4.50	6.13	60.00	69.25	1.88	52	1350	1250			
66	80.00	3.38	71.50	66.25	4.88	6.38	66.00	76.00	1.88	52	1775	1625			
72	86.50	3.50	78.50	72.25	5.00	6.50	72.00	82.50	1.88	60	2100	1925			
84	99.75	3.88	90.50	84.25	5.38	6.88	84.00	95.50	2.13	64	2825	2600			
96	113.25	4.25	102.75	96.25	5.75	7.25	96.00	108.50	2.38	68	3800	3275			

NOTES: 1. Blind Flanges will be furnished to thickness listed above unless otherwise specified.

2. Slip-On Flange is identical to AWWA C207 CL E.

3. These Flanges are commonly classed as 150# and have the same diameter and drilling as 150# MSS and 125 Cast Iron Flanges per ANSI B16.1.



FLANGES APPROXIMATE WEIGHT (LBS.)

Press. Class	Nom. Pipe Size	Weld Neck	Slip-On	Thd	Lap Joint	Blind	Socket Type
150	.5	2	1	1	1	2	2
	.75	2	1.5	1.5	1.5	2	2
	1	2.5	2	2	2	2	2
	1.25	2.5	2.5	2.5	2.5	3	3
	1.5	4	3	3	3	3	3
	2	6	5	5	5	4	5
	2.5	10	8	8	8	7	7
	3	11.5	9	10	9	9	8
	3.5	12	11	12	11	13	--
	4	16.5	13	13	12	17	--
	5	21	15	15	13	20	--
	6	26	17	19.5	18	27	--
8	42	28	30	28	47	--	
10	54	40	41	36	67	--	
12	88	61	65	60	123	--	
14	114	83	85	77	139	--	
16	142	106	93	104	187	--	
18	165	109	120	146	217	--	
20	197	148	155	159	283	--	
24	268	204	210	195	415	--	
300	.5	2	1.5	1.5	1.5	2	3
	.75	3	2.5	2.5	2.5	3	3
	1	4	3	3	3	4	3
	1.25	5	4.5	4.5	4.5	6	4
	1.5	7	6.5	6.5	6.5	7	6
	2	8	7	7	7	8	7
	2.5	12	10	10	10	12	10
	3	18	13	14	14.5	16	13
	3.5	20	16	16	16	21	--
	4	26.5	23.5	24	24	28	--
	5	36	29	31	26	37	--
	6	45	36	36	38	48	--
8	69	56	56	55	79	--	
10	100	77	80	88	122	--	
12	142	113	110	139	183	--	
14	206	159	164	184	241	--	
16	249	210	220	234	315	--	
18	306	253	280	305	414	--	
20	369	307	325	375	515	--	
24	579	490	490	530	800	--	
400	4	30	24	24	22	33	--
	5	39	31	31	29	44	--
	6	49	39	39	37	61	--
	8	78	63	63	59	100	--
	10	110	91	91	95	155	--
	12	160	129	129	152	226	--
	14	233	191	191	210	310	--
	16	294	253	253	280	398	--
18	360	310	310	345	502	--	
20	445	378	378	420	621	--	
24	640	539	539	615	936	--	
600	.5	3	2	2	2	2	3
	.75	3.5	3	3	3	3	3
	1	4	3.5	3.5	3.5	4	4
	1.25	5.5	4.5	4.5	4.5	6	6
	1.5	8	6.5	6.5	6.5	8	7
	2	10	8	8	8	10	9
	2.5	14	12	12	11	15	13

Press. Class	Nom. Pipe Size	Weld Neck	Slip-On	Thd	Lap Joint	Blind	Socket Type
600	3	18	15	15	14	20	16
	3.5	26	21	21	20	29	--
	4	37	33	33	31	41	--
	5	68	63	63	63	68	--
	6	73	80	80	78	86	--
	8	112	97	97	112	139	--
	10	189	177	177	195	231	--
	12	226	215	215	240	295	--
	14	347	259	259	290	378	--
	16	481	366	366	400	527	--
	18	555	475	476	469	665	--
	20	690	612	612	604	855	--
24	977	876	876	866	1175	--	
900	3	29	31	31	25	32	--
	4	51	53	53	51	54	--
	5	86	83	83	81	87	--
	6	110	108	108	105	113	--
	8	187	172	172	188	197	--
	10	268	245	245	277	290	--
	12	372	326	326	371	413	--
	14	562	380	380	397	494	--
	16	685	459	459	488	619	--
	18	924	647	647	670	880	--
	20	1164	792	792	868	1107	--
	24	2107	1480	1480	1659	2099	--
1500	.5	7	6	6	6	4	6.25
	.75	7	6	6	6	6	6.25
	1	8.5	7.5	7.5	7.5	9	8
	1.25	10	10	10	10	10	11
	1.5	14	14	14	14	14	15
	2	24	22	22	21	25	24
	2.5	36	36	36	29	35	38
	3	48	48	48	48	--	--
	4	69	73	75	73	--	--
	5	132	132	138	142	--	--
	6	164	164	170	159	--	--
	8	273	258	286	302	--	--
10	454	436	485	507	--	--	
12	690	667	749	775	--	--	
14							
16							
18							
20							
24							
2500	.5	8	7	7	7	--	--
	.75	9	9	8	10	--	--
	1	13	12	12	12	--	--
	1.25	20	18	17	18	--	--
	1.5	28	25	24	25	--	--
	2	42	38	37	39	--	--
	2.5	52	55	53	56	--	--
	3	94	83	80	86	--	--
	4	146	127	122	133	--	--
	5	244	210	204	223	--	--
	6	378	323	314	345	--	--
	8	576	485	471	533	--	--
10	1068	925	897	1025	--	--	
12	1608	1300	1262	1464	--	--	

**WEIGHT
UPON APPLICATION**

NOTES: Weights of Class 400 Flanges, sizes NPS .5 through 3.5 are same as Class 600.
Weights of Class 900 Flanges, sizes NPS .5 through 2.5 are same as Class 1500.

'R' Numbers of API & ANSI for Standard Ring-Joint Flanges

Nominal Pipe Size	150 #	300 # 400 # 600 #	900 #	1500 #	2500 #	Nominal Pipe Size	150 #	300 # 400 # 600 #	900 #	1500 #	2500 #
1/2	--	R-11	R-12	R-12	R-13	5	R-40	R-41	R-41	R-44	R-42
3/4	--	R-13	R-14	R-14	R-16	6	R-43	R-45	R-45	R-46	R-47
1	R-15	R-16	R-16	R-16	R-18	8	R-48	R-49	R-49	R-50	R-51
1 1/4	R-17	R-18	R-18	R-18	R-21	10	R-52	R-53	R-53	R-54	R-55
1 1/2	R-19	R-20	R-20	R-20	R-23	12	R-56	R-57	R-57	R-58	R-60
2	R-22	R-23	R-24	R-24	R-26	14	R-59	R-61	R-62	R-63	--
2 1/2	R-25	R-26	R-27	R-27	R-28	16	R-64	R-65	R-66	R-67	--
3	R-29	R-31*	R-31	R-35	R-32	18	R-68	R-69	R-70	R-71	--
3 1/2	R-33	R-34	--	--	--	20	R-72	R-73	R-74	R-75	--
4	R-36	R-37	R-37	R-39	R-38	24	R-76	R-77	R-78	R-79	--

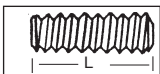
NOTES: ANSI 600 - API 2000, 900 - API 3000, 1500 - API 5000

*With Lapped Flanges use no. R30 instead of no. R31.

**Diameter & Length of Alloy Steel Stud Bolts for 1/16 and 1/4 Inch Raised Face Flanges
ANSI B16.5**

Nominal Pipe Size	150 #	300 #	400 #	600 #	900 #	1500 #	2500 #
	1/16 Raised Face	1/16 Raised Face	1/4 Raised Face	1/4 Raised Face	1/4 Raised Face	1/4 Raised Face	1/4 Raised Face
1/2	4 - 1/2 x 2 1/4	4 - 1/2 x 2 1/2	4 - 1/2 x 3	4 - 1/2 x 3	4 - 3/4 x 4	4 - 3/4 x 4	4 - 3/4 x 4 3/4
3/4	4 - 1/2 x 2 1/2	4 - 5/8 x 3	4 - 5/8 x 3 1/2	4 - 5/8 x 3 1/4	4 - 3/4 x 4 1/4	4 - 3/4 x 4 1/4	4 - 3/4 x 4 3/4
1	4 - 1/2 x 2 1/2	4 - 5/8 x 3 1/4	4 - 5/8 x 3 1/2	4 - 5/8 x 3 1/2	4 - 7/8 x 4 3/4	4 - 7/8 x 4 3/4	4 - 7/8 x 5 1/4
1 1/4	4 - 1/2 x 2 3/4	4 - 5/8 x 3 3/4	4 - 5/8 x 3 3/4	4 - 5/8 x 3 3/4	4 - 7/8 x 5	4 - 7/8 x 5	4 - 1 x 6
1 1/2	4 - 1/2 x 2 3/4	4 - 5/8 x 3 3/2	4 - 3/4 x 4 1/4	4 - 3/4 x 4 1/4	4 - 1 x 5 1/4	4 - 1 x 5 1/4	4 - 1 1/8 x 6 1/2
2	4 - 5/8 x 3 1/4	8 - 5/8 x 3 1/2	8 - 5/8 x 4 1/4	8 - 5/8 x 4 1/4	8 - 7/8 x 5 1/2	8 - 7/8 x 5 1/2	8 - 1 x 6 3/4
2 1/2	4 - 5/8 x 3 1/2	8 - 3/4 x 4	8 - 3/4 x 4 3/4	8 - 3/4 x 5	8 - 1 x 6 1/4	8 - 1 x 6 1/4	8 - 1 1/8 x 7 3/4
3	4 - 5/8 x 3 1/2	8 - 3/4 x 4 1/4	8 - 3/4 x 5	8 - 3/4 x 5	8 - 7/8 x 5 1/2	8 - 1 1/8 x 6 3/4	8 - 1 1/4 x 8 1/2
3 1/2	8 - 5/8 x 3 1/2	8 - 3/4 x 4 1/4	8 - 7/8 x 5 1/2	8 - 7/8 x 5 1/2	--	--	--
4	8 - 5/8 x 3 1/2	8 - 3/4 x 4 1/2	8 - 7/8 x 5 1/2	8 - 7/8 x 5 3/4	8 - 1 1/8 x 6 1/2	8 - 1 1/4 x 7 1/2	8 - 1 1/2 x 9 3/4
5	8 - 3/4 x 3 3/4	8 - 3/4 x 4 3/4	8 - 7/8 x 5 3/4	8 - 1 x 6 1/2	8 - 1 1/4 x 7 1/2	8 - 1 1/2 x 9 3/4	8 - 1 3/4 x 11 3/4
6	8 - 3/4 x 4	12 - 3/4 x 4 3/4	12 - 7/8 x 6	12 - 1 x 6 3/4	12 - 1 1/8 x 7 1/2	12 - 1 3/8 x 10	8 - 2 x 13 1/2
8	8 - 3/4 x 4 1/4	12 - 7/8 x 5 1/2	12 - 1 x 6 3/4	12 - 1 1/8 x 7 3/4	12 - 1 1/8 x 8 1/2	12 - 1 1/8 x 11 1/4	12 - 2 x 15
10	12 - 7/8 x 4 3/4	16 - 1 x 6 1/4	16 - 1 1/8 x 7 1/2	16 - 1 1/4 x 8 1/2	16 - 1 1/8 x 9	12 - 1 1/8 x 13 3/4	12 - 2 1/2 x 19
12	12 - 7/8 x 4 3/4	16 - 1 1/8 x 6 3/4	16 - 1 1/4 x 8	20 - 1 1/4 x 8 3/4	20 - 1 1/8 x 9 3/4	16 - 2 x 14 3/4	12 - 2 3/4 x 21
14	12 - 1 x 5 1/4	20 - 1 1/8 x 7	20 - 1 1/4 x 8 1/4	20 - 1 1/8 x 9 1/4	20 - 1 1/2 x 10 1/2	16 - 2 1/4 x 16	--
16	16 - 1 x 5 1/2	20 - 1 1/4 x 7 1/2	20 - 1 1/8 x 8 3/4	20 - 1 1/2 x 10	20 - 1 1/8 x 11	16 - 2 1/2 x 17 1/2	--
18	16 - 1 1/8 x 6	24 - 1 1/4 x 7 3/4	24 - 1 1/8 x 9	20 - 1 1/8 x 10 3/4	20 - 1 1/8 x 12 3/4	16 - 2 3/4 x 19 1/4	--
20	20 - 1 1/8 x 6 1/4	24 - 1 1/4 x 8 1/4	24 - 1 1/2 x 9 1/2	24 - 1 1/8 x 11 1/2	20 - 2 x 13 1/2	16 - 3 x 21	--
24	20 - 1 1/4 x 7	24 - 1 1/2 x 9 1/4	24 - 1 3/4 x 10 1/2	24 - 1 1/8 x 13	20 - 2 1/2 x 17	16 - 3 1/2 x 24	--

NOTES: Ordering Information



D nominal size or diameter
L length from first to last thread



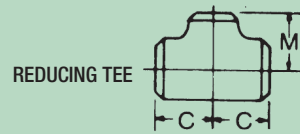
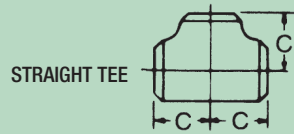
Stud Bolt Dimensions for Ring-Joint Flanges							
Nominal Pipe Size	150 #	300 #	400 #	600 # API 2000	900 # API 3000	1500 # API 5000	2500 #
1/2	--	4 - 1/2 x 3	4 - 1/2 x 3	4 - 1/2 x 3	4 - 3/4 x 4 1/4	4 - 3/4 x 4 1/4	4 - 3/4 x 4 3/4
3/4	--	4 - 5/8 x 3 1/4	4 - 5/8 x 3 1/2	4 - 5/8 x 3 1/4	4 - 3/4 x 4 1/2	4 - 3/4 x 4 1/2	4 - 3/4 x 5
1	4 - 1/2 x 3	4 - 5/8 x 3 1/4	4 - 5/8 x 3 1/2	4 - 5/8 x 3 1/2	4 - 7/8 x 5	4 - 7/8 x 5	4 - 7/8 x 5 1/2
1 1/4	4 - 1/2 x 3 1/4	4 - 5/8 x 3 3/4	4 - 5/8 x 3 3/4	4 - 5/8 x 3 3/4	4 - 7/8 x 5	4 - 7/8 x 5	4 - 1 x 6
1 1/2	4 - 1/2 x 3 1/4	4 - 3/4 x 4	4 - 3/4 x 4 1/4	4 - 3/4 x 4 1/4	4 - 1 x 5 1/2	4 - 1 x 5 1/2	4 - 1 1/8 x 6 3/4
2	4 - 5/8 x 3 3/4	8 - 5/8 x 4 1/4	8 - 5/8 x 4 1/4	8 - 5/8 x 4 1/2	8 - 7/8 x 5 3/4	8 - 7/8 x 5 3/4	8 - 1 x 7
2 1/2	4 - 5/8 x 4	8 - 3/4 x 4 1/2	8 - 3/4 x 4 3/4	8 - 3/4 x 4 3/4	8 - 1 x 6 1/4	8 - 1 x 6 1/4	8 - 1 1/8 x 8
3	4 - 5/8 x 4 1/4	8 - 3/4 x 5	8 - 3/4 x 5	8 - 3/4 x 5 1/4	8 - 7/8 x 5 3/4	8 - 1 1/8 x 7	8 - 1 1/4 x 9
4	8 - 5/8 x 4 1/4	8 - 3/4 x 5 1/4	8 - 7/8 x 5 1/2	8 - 7/8 x 6	8 - 1 1/8 x 6 3/4	8 - 1 1/4 x 7 3/4	8 - 1 1/2 x 10 1/4
5	8 - 3/4 x 4 1/2	8 - 3/4 x 5 1/4	8 - 7/8 x 5 3/4	8 - 1 x 6 1/2	8 - 1 1/4 x 7 1/2	8 - 1 1/2 x 9 3/4	8 - 1 3/4 x 12 1/4
6	8 - 3/4 x 4 1/2	12 - 3/4 x 5 3/4	12 - 7/8 x 6	12 - 1 x 7	12 - 1 1/8 x 7 3/4	12 - 1 3/8 x 10 1/4	8 - 2 x 14
8	8 - 3/4 x 4 3/4	12 - 7/8 x 6 1/4	12 - 1 x 6 3/4	12 - 1 1/8 x 8	12 - 1 3/8 x 8 3/4	12 - 1 5/8 x 11 3/4	12 - 2 x 15 1/2
10	12 - 7/8 x 5 1/4	16 - 1 x 7 1/4	16 - 1 1/8 x 7 1/2	16 - 1 1/4 x 8 3/4	16 - 1 3/8 x 9 1/4	12 - 1 7/8 x 13 1/2	12 - 2 1/2 x 20
12	12 - 7/8 x 5 1/2	16 - 1 1/8 x 7 1/2	16 - 1 1/4 x 8	20 - 1 1/4 x 9	20 - 1 3/8 x 10	16 - 2 x 15 1/4	12 - 2 3/4 x 22
14	12 - 1 x 6	20 - 1 1/8 x 7 3/4	20 - 1 1/4 x 8 1/4	20 - 1 3/8 x 9 1/2	20 - 1 1/2 x 11	16 - 2 1/4 x 16 3/4	--
16	16 - 1 x 6	20 - 1 1/4 x 8 1/2	20 - 1 3/8 x 8 3/4	20 - 1 1/2 x 10 1/4	20 - 1 3/8 x 11 1/2	16 - 2 1/2 x 18 1/2	--
18	16 - 1 1/8 x 6 1/2	24 - 1 1/4 x 8 1/4	24 - 1 3/8 x 9	20 - 1 3/8 x 11	20 - 1 3/8 x 13 1/4	16 - 2 3/4 x 20 1/4	--
20	20 - 1 1/8 x 7	24 - 1 1/4 x 9 1/4	24 - 1 1/2 x 9 3/4	24 - 1 3/8 x 11 3/4	20 - 2 x 14 1/4	16 - 3 x 22 1/4	--
24	20 - 1 1/4 x 7 3/4	24 - 1 1/2 x 10 1/4	24 - 1 3/4 x 11	24 - 1 7/8 x 13 1/2	20 - 2 1/2 x 18	16 - 3 1/2 x 25 1/2	--

NOTES: It is suggested that orders conform to Industrial Fasteners Institute measurements referred to under 'Tolerances'.
If ordering studs by their overall length, this must be clearly indicated.

Nom. Pipe Size	Pipe O.D.	Light Wall *Note 1	90 LONG RAD Weld ELL		90 REDUCING L. R. Weld ELL		45 LONG RAD Weld ELL		180 LONG RAD Weld ELL				90 SHORT RAD Weld ELL		180 SHORT RAD Weld ELL			CAP		LAP JOINT STUB END					
			Sch. 20	Sch. 30	2 STD	Sch. 40	Sch. 60	XS	Sch. 80	Sch. 100	Sch. 120	Sch. 140	Sch. 160	XXS	A	B	K	D	V	E		F		G	
			Length E *Note 1	Limiting Wall Thickness	Length E ₁ *Note 2	ASA	MSS																		
0.50	.840	.083	--	.095	.109	.109	--	.147	.147	--	--	--	.188	.294	1.50	0.62	1.88	--	--	1.00	0.18	1.00	3.00	2.00	1.38
0.75	1.050	.083	--	.095	.113	.113	--	.154	.154	--	--	--	.219	.308	1.50	0.75	2.00	--	--	1.00	0.15	1.00	3.00	2.00	1.69
1.00	1.315	.109	--	.114	.133	.133	--	.179	.179	--	--	--	.250	.358	1.50	0.88	2.19	1.00	1.62	1.50	0.18	1.50	4.00	2.00	2.00
1.25	1.660	.109	--	.117	.140	.140	--	.191	.191	--	--	--	.250	.382	1.88	1.00	2.75	1.25	2.06	1.50	0.19	1.50	4.00	2.00	2.50
1.50	1.900	.109	--	.125	.145	.145	--	.200	.200	--	--	--	.281	.400	2.25	1.12	3.25	1.50	2.44	1.50	0.20	1.50	4.00	2.00	2.88
2.00	2.375	.109	--	.125	.154	.154	--	.218	.218	--	--	--	.344	.436	3.00	1.38	4.19	2.00	3.19	1.50	0.22	1.75	6.00	2.50	3.62
2.50	2.875	.120	--	.188	.203	.203	--	.276	.276	--	--	--	.375	.552	3.75	1.75	5.19	2.50	3.94	1.50	0.28	2.00	6.00	2.50	4.12
3.00	3.500	.120	--	.188	.216	.216	--	.300	.300	--	--	--	.438	.600	4.50	2.00	6.25	3.00	4.75	2.00	0.30	2.50	6.00	2.50	5.00
3.50	4.000	.120	--	.188	.226	.226	--	.318	.318	--	--	--	--	--	5.25	2.25	7.25	3.50	5.50	2.50	0.32	3.00	6.00	3.00	5.50
4.00	4.500	.120	--	.188	.237	.237	--	.337	.337	--	.438	--	.531	.674	6.00	2.50	8.25	4.00	6.25	2.50	0.34	3.00	6.00	3.00	6.19
5.00	5.563	.134	--	--	.258	.258	--	.375	.375	--	.500	--	.625	.750	7.50	3.12	10.31	5.00	7.75	3.00	0.38	3.50	8.00	3.00	7.31
6.00	6.625	.134	--	--	.280	.280	--	.432	.432	--	.562	--	.719	.864	9.00	3.75	12.31	6.00	9.31	3.50	0.43	4.00	8.00	3.50	8.50
8.00	8.625	.148	.250	.277	.322	.322	.406	.500	.500	.594	.719	.812	.906	.875	12.00	5.00	16.31	8.00	12.31	4.00	0.50	5.00	8.00	4.00	10.62
10.00	10.750	.165	.250	.307	.365	.365	.500	.500	.594	.719	.844	1.000	1.125	1.000	15.00	6.25	20.38	10.00	15.38	5.00	0.50	6.00	10.00	5.00	12.75
12.00	12.750	.180	.250	.330	.375	.406	.562	.500	.688	.844	1.000	1.125	1.312	1.000	8.00	7.50	24.38	12.00	18.38	6.00	0.50	7.00	10.00	6.00	15.00
14.00	14.000	.250	.312	.375	.375	.438	.594	.500	.750	.938	1.094	1.250	1.406	--	21.00	8.75	28.00	14.00	21.00	6.50	0.50	7.50	12.00	6.00	16.25
16.00	16.000	.250	.312	.375	.375	.500	.656	.500	.844	1.031	1.219	1.438	1.594	--	24.00	10.00	32.00	16.00	24.00	7.00	0.50	8.00	12.00	6.00	18.50
18.00	18.000	.250	.312	.438	.375	.562	.750	.500	.938	1.156	1.375	1.562	1.781	--	27.00	11.25	36.00	18.00	27.00	8.00	0.50	9.00	12.00	6.00	21.00
20.00	20.000	.250	.375	.500	.375	.594	.812	.500	1.031	1.281	1.500	1.750	1.969	--	30.00	12.50	40.00	20.00	30.00	9.00	0.50	10.00	12.00	6.00	23.00
24.00 ^(B)	24.000	.250	.375	.562	.375	.688	.969	.500	1.219	1.531	1.812	2.062	2.344	--	36.00	15.00	48.00	24.00	36.00	10.50	0.50	12.00	12.00	6.00	27.25
30.00 ^(B)	30.000	.312	.500	.625	.375	--	--	.500	--	--	--	--	--	--	45.00	18.50	--	--	--	10.50	0.50	--	--	--	--
36.00 ^(B)	36.000	.312	.500	.625	.375	.750	--	.500	--	--	--	--	--	--	54.00	22.25	--	--	--	10.50	0.50	--	--	--	--
42.00 ^(B)	42.000	--	--	--	.375	--	--	.500	--	--	--	--	--	--	63.00	26.00	--	--	--	12.00	0.50	--	--	--	--

- NOTES: 1. Length E applies for thickness not exceeding that given in column "Limiting Wall Thickness for Length E."
2. Length E₁ applies for thickness greater than that given in column "Limiting Wall Thickness" for NPS 24 and smaller. For NPS 26 and larger, Length E₁ shall be in agreement between the manufacturer and purchaser.
3. May be welded construction with x-ray or ultrasonically tested.

BOLT & GASKET INFORMATION / SEAMLESS WELDING FITTING DIMENSIONS



Nom. Pipe Size	Outlet	C	M	H	Nom. Pipe Size	Outlet	C	M	H	Nom. Pipe Size	Outlet	C	M	H	Nom. Pipe Size	Outlet	C	M	H			
0.75	0.75	1.12	1.12	--	4.00	4.00	4.12	4.12	--	14.00	14.00	11.00	11.00	--	30.00 (4)	30.00	22.00	22.00	--			
	0.50	1.12	1.12	1.50		3.50	4.12	4.00	4.00		12.00	11.00	10.62	13.00		24.00	22.00	21.00	24.00			
1.00	1.00	1.50	1.50	--		3.00	4.12	3.88	4.00		10.00	11.00	10.12	13.00		20.00	22.00	20.00	24.00			
	0.75	1.50	1.50	2.00		2.50	4.12	3.75	4.00		8.00	11.00	9.75	13.00		18.00	22.00	19.50	--			
	0.50	1.50	1.50	2.00		2.00	4.12	3.50	4.00		6.00	11.00	9.38	13.00		16.00	22.00	19.00	--			
	0.50	1.50	1.50	2.00		1.50	4.12	3.38	4.00		16.00	12.00	12.00	--		14.00	22.00	19.00	--			
1.25	1.25	1.88	1.88	--		5.00	5.00	4.88	4.88		--	16.00	14.00	12.00		12.00	14.00	36.00 (4)	36.00	26.50	26.50	--
	1.00	1.88	1.88	2.00			4.00	4.88	4.62		5.00		12.00	12.00		11.62	14.00		30.00	26.50	25.00	24.00
	0.75	1.88	1.88	2.00			3.50	4.88	4.50		5.00		10.00	12.00		11.12	14.00		24.00	26.50	24.00	24.00
	0.50	1.88	1.88	2.00			3.00	4.88	4.38		5.00		8.00	12.00		10.75	14.00		20.00	26.50	23.00	--
1.50	1.50	2.25	2.25	--	2.50		4.88	4.25	5.00	6.00	12.00		10.38	--	18.00	26.50	22.50		--			
	1.25	2.25	2.25	2.50	2.00		4.88	4.12	5.00	16.00	13.50		13.50	--	16.00	30.00	28.00		--			
	1.00	2.25	2.25	2.50	6.00		5.62	5.62	--	14.00	13.50		13.00	15.00	42.00	30.00	28.00		24.00			
	0.75	2.25	2.25	2.50	5.00		5.62	5.38	5.50	12.00	13.50		12.62	15.00	36.00	30.00	28.00		24.00			
2.00	2.00	2.50	2.50	--	6.00	4.00	5.62	5.12	5.50	18.00	10.00	13.50	12.12	15.00	42.00 (4)	30.00	30.00	28.00	24.00			
	1.50	2.50	2.38	3.00		3.50	5.62	5.00	5.50		10.00	13.50	12.12	15.00		24.00	30.00	26.00	--			
	1.25	2.50	2.25	3.00		3.00	5.62	4.88	5.50		8.00	13.50	11.75	--		20.00	30.00	26.00	--			
	1.00	2.50	2.00	3.00		2.50	5.62	4.75	5.50		20.00	15.00	15.00	--		18.00	15.00	14.50	20.00			
	0.75	2.50	1.75	3.00		6.00	7.00	7.00	--		16.00	15.00	14.00	20.00		16.00	15.00	14.00	20.00			
2.50	2.50	3.00	3.00	--	8.00	6.00	7.00	6.62	6.00	20.00	14.00	15.00	14.00	20.00	NOTES: 1. Light Wall thicknesses are identical to stainless steel Schedule 10S in sizes through 12" and Schedule 10 in sizes 14" and larger. 2. Standard Wall thicknesses are identical to stainless steel Schedule 40S in sizes through 12". 3. Extra Strong Wall thicknesses are identical to stainless steel Schedule 80S in sizes through 12". 4. May be welded construction with x-ray or ultrasonically tested. 5. Other types, sizes and thicknesses of fittings on application. 6. Stocked in carbon steel.	14.00	15.00	14.00	20.00			
	2.00	3.00	2.75	3.50		5.00	7.00	6.38	6.00		12.00	15.00	13.62	20.00		16.00	17.00	17.00	20.00			
	1.50	3.00	2.62	3.50		4.00	7.00	6.12	6.00		10.00	15.00	13.12	--		14.00	17.00	16.50	20.00			
	1.25	3.00	2.50	3.50		3.50	7.00	6.00	6.00		8.00	15.00	12.75	--		16.00	17.00	16.00	20.00			
	1.00	3.00	2.25	3.50		10.00	8.50	8.50	--		14.00	17.00	16.00	--		14.00	17.00	16.00	--			
3.00	3.00	3.38	3.38	--	10.00	8.00	8.50	8.00	7.00	24.00 (4)	24.00	17.00	17.00	--	14.00	17.00	16.00	--				
	2.50	3.38	3.25	3.50		6.00	8.50	7.62	7.00		20.00	17.00	17.00	20.00	14.00	17.00	16.00	--				
	2.00	3.38	3.00	3.50		5.00	8.50	7.50	7.00		18.00	17.00	16.50	20.00	14.00	17.00	16.00	--				
	1.50	3.38	2.88	3.50		4.00	8.50	7.25	7.00		16.00	17.00	16.00	20.00	14.00	17.00	16.00	--				
3.50	1.25	3.38	2.75	3.50	12.00	12.00	10.00	10.00	--	10.00	10.00	10.00	9.50	8.00	12.00	17.00	15.62	--				
	3.50	3.75	3.75	--		10.00	10.00	9.50	8.00		12.00	17.00	15.62	--	10.00	17.00	15.12	--				
	3.00	3.75	3.62	4.00		8.00	10.00	9.00	8.00		10.00	17.00	15.12	--	10.00	17.00	15.12	--				
	2.50	3.75	3.50	4.00		6.00	10.00	8.62	8.00		10.00	17.00	15.12	--	10.00	17.00	15.12	--				
	2.00	3.75	3.25	4.00		5.00	10.00	8.50	8.00		10.00	17.00	15.12	--	10.00	17.00	15.12	--				
1.50	3.75	3.12	4.00	5.00	10.00	8.50	8.00	10.00	17.00	15.12	--	10.00	17.00	15.12	--							

WELDING FITTING

APPROXIMATE WEIGHT (LBS.)

APPROXIMATE WEIGHT (LBS.)

90° LR Weld ELLS

Nominal Size	Wall Thickness							Nominal Size
	STD	Sch. 40	XS	Sch. 80	Sch. 120	Sch. 160	XXS	
0.50	0.17	0.17	0.22	0.22	--	--	--	0.50
0.75	0.17	0.17	0.23	0.23	--	--	0.70	0.75
1.00	0.34	0.34	0.45	0.45	--	0.59	0.75	1.00
1.25	0.58	0.58	0.77	0.77	--	0.97	1.30	1.25
1.50	0.84	0.84	1.10	1.10	--	1.50	2.00	1.50
2.00	1.50	1.50	2.10	2.10	--	3.00	3.70	2.00
2.50	3.00	3.00	4.00	4.00	--	5.20	7.10	2.50
3.00	4.70	4.70	6.30	6.30	--	8.80	11.00	3.00
3.50	6.60	6.60	9.00	9.00	--	--	16.00	3.50
4.00	8.90	8.90	12.00	12.00	16.00	19.00	23.00	4.00
5.00	15.00	15.00	21.00	21.00	28.00	34.00	40.00	5.00
6.00	24.00	24.00	35.00	35.00	45.00	56.00	66.00	6.00
8.00	47.00	47.00	71.00	71.00	100.00	123.00	120.00	8.00
10.00	83.00	83.00	112.00	132.00	184.00	238.00	230.00	10.00
12.00	123.00	132.00	162.00	219.00	311.00	397.00	325.00	12.00
14.00	158.00	183.00	208.00	307.00	420.00	546.00	--	14.00
16.00	207.00	273.00	273.00	450.00	631.00	809.00	--	16.00
18.00	263.00	390.00	347.00	634.00	879.00	1090.00	--	18.00
20.00	323.00	506.00	428.00	861.00	1208.00	1520.00	--	20.00
22.00	392.00	--	520.00	--	--	--	--	22.00
24.00	468.00	846.00	622.00	1470.00	1810.00	2510.00	--	24.00
26.00	550.00	--	720.00	--	--	--	--	26.00
30.00	733.00	--	972.00	--	--	--	--	30.00
36.00	1061.00	--	1407.00	--	--	--	--	36.00
42.00	1442.00	--	1916.00	--	--	--	--	42.00
48.00	1883.00	--	2511.00	--	--	--	--	48.00

45° LR Weld ELLS

0.50	0.09	0.09	0.11	0.11	--	--	--	0.50
0.75	0.09	0.09	0.11	0.11	--	--	--	0.75
1.00	0.17	0.17	0.22	0.22	--	0.29	0.38	1.00
1.25	0.29	0.29	0.39	0.39	--	0.49	0.67	1.25
1.50	0.42	0.42	0.56	0.56	--	0.75	0.99	1.50
2.00	0.75	0.75	1.00	1.00	--	1.50	1.90	2.00
2.50	1.50	1.50	2.00	2.00	--	2.60	3.50	2.50
3.00	2.30	2.30	3.20	3.20	--	4.40	5.70	3.00
3.50	3.30	3.30	4.50	4.50	--	--	8.20	3.50
4.00	4.40	4.40	6.20	6.20	7.80	9.30	11.00	4.00
5.00	7.50	7.50	11.00	11.00	14.00	17.00	20.00	5.00
6.00	12.00	12.00	18.00	18.00	22.00	28.00	33.00	6.00
8.00	23.00	23.00	36.00	36.00	50.00	61.00	60.00	8.00
10.00	42.00	42.00	56.00	66.00	92.00	119.00	115.00	10.00
12.00	61.00	66.00	81.00	110.00	156.00	199.00	161.00	12.00
14.00	79.00	81.00	104.00	154.00	207.00	273.00	--	14.00
16.00	104.00	137.00	137.00	225.00	316.00	405.00	--	16.00
18.00	132.00	195.00	174.00	317.00	431.00	550.00	--	18.00
20.00	162.00	253.00	214.00	431.00	604.00	770.00	--	20.00
22.00	196.00	--	260.00	--	--	--	--	22.00
24.00	234.00	423.00	311.00	735.00	996.00	1270.00	--	24.00
26.00	275.00	--	365.00	--	--	--	--	26.00
30.00	367.00	--	486.00	--	--	--	--	30.00
36.00	721.00	--	958.00	--	--	--	--	36.00
42.00	--	--	--	--	--	--	--	42.00
48.00	942.00	--	1255.00	--	--	--	--	48.00

90° SR Weld ELLS

Nominal Size	Wall Thickness							Nominal Size	
	STD	Sch. 40	XS	Sch. 80	Sch. 120	Sch. 160	XXS		
1.00	0.23	0.23	--	--	--	--	0.34	0.47	1.00
1.25	0.39	0.39	--	--	--	--	0.69	0.91	1.25
1.50	0.56	0.56	0.75	0.75	--	--	0.98	1.40	1.50
2.00	1.00	1.00	1.40	1.40	--	--	1.90	2.60	2.00
2.50	2.00	2.00	2.60	--	--	--	3.20	4.90	2.50
3.00	3.10	3.10	4.20	4.20	--	--	5.60	7.70	3.00
3.50	4.40	4.40	6.00	6.00	--	--	--	11.00	3.50
4.00	6.00	6.00	8.20	8.20	10.00	12.00	--	14.00	4.00
5.00	10.00	10.00	14.00	14.00	19.00	21.00	25.00	--	5.00
6.00	16.00	16.00	23.00	23.00	30.00	35.00	44.00	--	6.00
8.00	31.00	31.00	48.00	48.00	66.00	79.00	77.00	--	8.00
10.00	56.00	56.00	75.00	88.00	123.00	151.00	143.00	--	10.00
12.00	82.00	88.00	108.00	146.00	207.00	253.00	207.00	--	12.00
14.00	105.00	122.00	139.00	205.00	277.00	345.00	--	--	14.00
16.00	138.00	182.00	182.00	300.00	400.00	512.00	--	--	16.00
18.00	175.00	259.00	231.00	422.00	517.00	727.00	--	--	18.00
20.00	215.00	338.00	286.00	573.00	775.00	993.00	--	--	20.00
24.00	313.00	564.00	415.00	977.00	1340.00	1735.00	--	--	24.00
30.00	488.00	--	649.00	--	--	--	--	--	30.00
36.00	707.00	1300.00	939.00	--	--	--	--	--	36.00
42.00	1079.00	--	1278.00	--	--	--	--	--	42.00
48.00	1255.00	--	1674.00	--	--	--	--	--	48.00

CAPS

0.50	0.07	0.07	0.10	0.10	--	--	--	0.50
0.75	0.13	0.13	0.19	0.19	--	--	--	0.75
1.00	0.22	0.22	0.28	0.28	--	0.35	0.45	1.00
1.25	0.31	0.31	0.40	0.40	--	0.49	0.64	1.25
1.50	0.37	0.37	0.49	0.49	--	0.63	0.80	1.50
2.00	0.51	0.51	0.69	0.69	--	1.10	1.30	2.00
2.50	0.81	0.81	1.00	1.00	--	1.80	2.20	2.50
3.00	1.40	1.40	1.90	1.90	--	3.10	3.90	3.00
3.50	2.10	2.10	2.90	2.90	--	--	5.80	3.50
4.00	2.50	2.50	3.50	3.50	5.10	6.00	7.00	4.00
5.00	4.20	4.20	5.80	5.80	8.60	10.00	12.00	5.00
6.00	6.40	6.40	9.40	9.40	13.00	16.00	19.00	6.00
8.00	11.00	11.00	17.00	17.00	28.00	34.00	33.00	8.00
10.00	20.00	20.00	26.00	36.00	49.00	63.00	--	10.00
12.00	29.00	32.00	38.00	59.00	81.00	100.00	--	12.00
14.00	35.00	41.00	45.00	76.00	110.00	130.00	--	14.00
16.00	45.00	58.00	58.00	105.00	140.00	180.00	--	16.00
18.00	57.00	92.00	74.00	149.00	230.00	255.00	--	18.00
20.00	71.00	121.00	94.00	201.00	300.00	420.00	--	20.00
22.00	83.00	--	110.00	--	--	--	--	22.00
24.00	102.00	205.00	131.00	342.00	430.00	530.00	--	24.00
26.00	110.00	--	146.00	--	--	--	--	26.00
30.00	137.00	--	186.00	--	--	--	--	30.00
36.00	165.00	--	260.00	--	--	--	--	36.00

WELDING FITTING

APPROXIMATE WEIGHT (LBS.)

APPROXIMATE WEIGHT (LBS.)

Reducers (Concentric and Eccentric)

Tees (Straight and Reducing)

Nominal Size	Wall Thickness							Nominal Size	Wall Thickness								
	STD	Sch. 40	XS	Sch. 80	Sch. 120	Sch. 160	XXS		Run	Branch	STD	Sch. 40	XS	Sch. 80	Sch. 120	Sch. 160	XXS
	0.75	0.15	0.15	0.22	0.22	--	0.32		0.41	0.75 X	0.75 - 0.50	0.50	0.50	0.60	0.60	--	0.51
1.00	0.28	0.28	0.36	0.36	--	0.47	0.61	1.00 X	1.00 - 0.50	0.63	0.63	0.78	0.78	--	0.99	1.30	
1.25	0.38	0.38	0.50	0.50	--	0.63	0.87	1.25 X	1.25 - 0.75	1.20	1.20	1.40	1.40	--	1.70	2.30	
1.50	0.57	0.57	0.76	0.76	--	1.00	1.30	1.50 X	1.50 - 0.50	1.70	1.70	2.10	2.10	--	2.70	3.40	
2.00	0.90	0.90	1.20	1.20	--	1.90	2.30	2.00 X	2.00 - 0.75	4.20	4.20	4.10	4.10	--	5.00	5.90	
2.50	1.70	1.70	2.20	2.20	--	2.90	4.00	2.50 X	2.50 - 2.00	5.90	5.90	6.80	6.80	--	7.60	10.00	
3.00	2.20	2.20	3.00	3.00	--	4.20	5.40	2.50 X	1.50 - 1.00	6.80	6.80	6.80	6.80	--	6.70	9.00	
3.50	3.00	3.00	4.20	4.20	--	5.80	7.60	3.00 X	3.00 - 1.25	8.40	8.40	10.00	10.00	--	14.00	17.00	
4.00	3.60	3.60	5.00	5.00	6.30	7.50	9.20	3.50 X	3.50 - 1.50	11.00	11.00	14.00	14.00	--	--	21.00	
5.00	6.10	6.10	8.60	8.60	12.00	14.00	16.00	4.00 X	4.00 - 1.50	13.00	13.00	19.00	19.00	23.00	34.00	34.00	
6.00	8.70	8.70	13.00	13.00	17.00	21.00	24.00	5.00 X	5.00 - 2.00	22.00	22.00	28.00	28.00	44.00	53.00	53.00	
8.00	14.00	14.00	22.00	22.00	30.00	37.00	36.00	6.00 X	6.00 - 5.00	36.00	36.00	42.00	42.00	64.00	85.00	87.00	
10.00	24.00	24.00	32.00	38.00	52.00	67.00	61.00	6.00 X	4.00 - 2.50	33.00	33.00	42.00	42.00	64.00	64.00	67.00	
12.00	33.00	36.00	44.00	59.00	84.00	107.00	84.00	8.00 X	8.00	61.00	61.00	76.00	76.00	115.00	152.00	152.00	
14.00	59.00	69.00	78.00	115.00	164.00	208.00	--	8.00 X	6.00	61.00	61.00	76.00	76.00	115.00	115.00	114.00	
16.00	73.00	96.00	97.00	159.00	224.00	286.00	--	8.00 X	5.00 - 3.50	61.00	61.00	76.00	76.00	97.00	115.00	114.00	
18.00	88.00	131.00	117.00	213.00	304.00	385.00	--	10.00 X	10.00	91.00	91.00	129.00	161.00	215.00	280.00	241.00	
20.00	131.00	205.00	174.00	348.00	494.00	630.00	--	10.00 X	8.00	88.00	88.00	116.00	157.00	197.00	241.00	219.00	
22.00	144.00	--	191.00	--	--	--	--	10.00 X	6.00	88.00	88.00	116.00	120.00	180.00	223.00	201.00	
24.00	158.00	285.00	210.00	490.00	710.00	900.00	--	10.00 X	5.00 - 4.00	88.00	88.00	116.00	116.00	157.00	197.00	177.00	
26.00	205.00	--	272.00	--	--	--	--	12.00 X	12.00	147.00	147.00	187.00	253.00	353.00	429.00	353.00	
30.00	237.00	--	315.00	--	--	--	--	12.00 X	10.00	147.00	147.00	187.00	226.00	329.00	377.00	329.00	
36.00	285.00	--	379.00	--	--	--	--	12.00 X	8.00	143.00	143.00	180.00	180.00	294.00	341.00	294.00	
42.00	334.00	--	443.00	--	--	--	--	12.00 X	6.00	143.00	143.00	180.00	180.00	245.00	318.00	245.00	
48.00	395.00	--	515.00	--	--	--	--	12.00 X	5.00	143.00	143.00	180.00	180.00	226.00	318.00	226.00	

WELDING FITTING

APPROXIMATE WEIGHT (LBS.)

APPROXIMATE WEIGHT (LBS.)

Tees (Straight and Reducing)

Tees (Straight and Reducing)

Nominal Size		Wall Thickness						
Run	Branch	STD	Sch. 40	XS	Sch. 80	Sch. 120	Sch. 160	XXS
14.00 X	14.00	226.00	252.00	280.00	369.00	528.00	720.00	--
14.00 X	12.00	226.00	252.00	280.00	315.00	528.00	696.00	--
14.00 X	10.00	217.00	217.00	268.00	310.00	384.00	624.00	--
14.00 X	8.00	217.00	217.00	268.00	268.00	456.00	528.00	--
14.00 X	6.00	217.00	217.00	268.00	268.00	432.00	480.00	--
16.00 X	16.00	242.00	370.00	369.00	548.00	826.00	1066.00	--
16.00 X	14.00	242.00	370.00	369.00	440.00	728.00	910.00	--
16.00 X	12.00	242.00	359.00	359.00	399.00	624.00	884.00	--
16.00 X	10.00	235.00	354.00	352.00	360.00	572.00	884.00	--
16.00 X	8.00	235.00	354.00	352.00	360.00	572.00	884.00	--
16.00 X	6.00	235.00	354.00	352.00	360.00	572.00	884.00	--
18.00 X	18.00	333.00	525.00	425.00	710.00	1160.00	1392.00	--
18.00 X	16.00	333.00	525.00	425.00	615.00	957.00	1160.00	--
18.00 X	14.00	333.00	427.00	425.00	569.00	957.00	1160.00	--
18.00 X	12.00	333.00	427.00	339.00	516.00	957.00	1160.00	--
18.00 X	10.00	319.00	330.00	322.00	496.00	957.00	1160.00	--
18.00 X	8.00	319.00	330.00	322.00	449.00	957.00	1150.00	--
20.00 X	20.00	504.00	706.00	583.00	1021.00	1504.00	1792.00	--
20.00 X	18.00	504.00	584.00	504.00	903.00	1312.00	1536.00	--
20.00 X	16.00	504.00	506.00	504.00	782.00	1312.00	1536.00	--
20.00 X	14.00	493.00	494.00	493.00	713.00	1206.00	1536.00	--
20.00 X	12.00	493.00	494.00	493.00	713.00	1206.00	1536.00	--
20.00 X	10.00	482.00	485.00	482.00	645.00	1206.00	1536.00	--
20.00 X	8.00	482.00	485.00	482.00	645.00	1206.00	1536.00	--
22.00 X	22.00 - 20.00	555.00	--	811.00	--	--	--	--

Nominal Size		Wall Thickness						
Run	Branch	STD	Sch. 40	XS	Sch. 80	Sch. 120	Sch. 160	XXS
22.00 X	18.00 - 16.00	527.00	--	670.00	--	--	--	--
22.00 X	14.00 - 10.00	445.00	--	517.00	--	--	--	--
24.00 X	24.00	765.00	1257.00	934.00	1673.00	2808.00	3096.00	--
24.00 X	22.00	681.00	1130.00	849.00	1673.00	2808.00	3096.00	--
24.00 X	20.00	601.00	860.00	683.00	1361.00	2206.00	2800.00	--
24.00 X	18.00	601.00	860.00	683.00	1200.00	2206.00	2800.00	--
24.00 X	16.00	506.00	681.00	509.00	1106.00	2206.00	2440.00	--
24.00 X	14.00	506.00	681.00	509.00	1106.00	2206.00	2440.00	--
24.00 X	12.00	506.00	681.00	509.00	1021.00	2026.00	2250.00	--
24.00 X	10.00	424.00	681.00	509.00	1021.00	2026.00	2250.00	--
26.00 X	26.00 - 24.00	826.00	--	1121.00	--	--	--	--
26.00 X	22.00 - 20.00	727.00	--	925.00	--	--	--	--
26.00 X	18.00 - 12.00	614.00	--	713.00	--	--	--	--
30.00 X	30.00	1130.00	--	1510.00	--	--	--	--
30.00 X	26.00 - 24.00	1065.00	--	1257.00	--	--	--	--
30.00 X	22.00 - 18.00	921.00	--	1048.00	--	--	--	--
30.00 X	16.00 - 14.00	792.00	--	921.00	--	--	--	--
36.00 X	36.00	1617.00	2925.00	2165.00	--	--	--	--
36.00 X	30.00	1524.00	2925.00	1893.00	--	--	--	--
36.00 X	26.00 - 20.00	1321.00	2380.00	1504.00	--	--	--	--
36.00 X	18.00	1321.00	2380.00	1321.00	--	--	--	--
42.00 X	42.00	2900.00	--	2900.00	--	--	--	--
42.00 X	36.00 - 20.00	2755.00	--	2755.00	--	--	--	--
48.00 X	48.00	3215.00	--	4080.00	--	--	--	--
48.00 X	42.00 - 24.00	2420.00	--	3535.00	--	--	--	--

API Trim Number	Terms	Seat	Disc	Backseat	Stem
1	410	410	410	410	410
2	304	304	304	304	304
3	310	310	310	310	310
4	HARD 410	Hard 410	Hard 410	410	410
5	410 FHF	410/Stellite	410/Stellite	410	410
5A	410/Ni-CR FHF	Hardfaced Ni-Cr	Hardfaced Ni-Cr	410	410
6	410 and Cu-Ni	Cu-Ni	Cu-Ni	410	410
7	410 and Hard 410	Hard 410	Hard 410	410	410
8	410 HHF	410/Stellite	410	410	410
8A	410/Ni-Cr HHF	Ni-Cr	410	410	410
9	Monel	Monel	Monel	Monel	Monel
10	316	316	316	316	316
11	Monel HHF	Monel/Stellite	Monel	Monel	Monel
12	316 HHF	316/Stellite	316	316	316
13	Alloy 20	Alloy 20	Alloy 20	Alloy 20	Alloy 20
14	Alloy 20 HHF	Alloy 20/Stellite	Alloy 20	Alloy 20	Alloy 20
15	304 FHF	304/Stellite	304/Stellite	304	304
16	316 FHF	316/Stellite	316/Stellite	316	316
17	347 FHF	347/Stellite	347/Stellite	347	347
18	Alloy 20 FHF	Alloy 20/Stellite	Alloy 20/Stellite	Alloy 20	Alloy 20

FHF - FULL HARD FACED

HHF - HALF HARD FACED

150 LB. FACE TO FACE DIMENSIONS PER ASME B16.10										
Nominal Size	Ball Long Pattern		Ball Short Pattern		Gate Solid Wedge and Double Disc		Globe, Lift Check, and Swing Check		For RTJ add:	
	mm	inch	mm	inch	mm	inch	mm	inch	mm	inch
0.50	108	4.25	108	4.25	108	4.25	108	4.25	--	--
0.75	117	4.62	117	4.62	117	4.62	117	4.62	--	--
1.00	127	5.00	127	5.00	127	5.00	127	5.00	13	0.50
1.25	140	5.50	140	5.50	140	5.50	140	5.50	13	0.50
1.50	165	6.50	165	6.50	165	6.50	165	6.50	13	0.50
2.00	178	7.00	178	7.00	178	7.00	203	8.00	13	0.50
2.50	190	7.50	190	7.50	190	7.50	216	8.50	13	0.50
3.00	203	8.00	203	8.00	203	8.00	241	9.50	13	0.50
4.00	229	9.00	229	9.00	229	9.00	292	11.50	13	0.50
5.00	--	--	--	--	254	10.00	356	14.00	13	0.50
6.00	394	15.50	267	10.50	267	10.50	406	16.00	13	0.50
8.00	457	18.00	292	11.50	292	11.50	495	19.50	13	0.50
10.00	533	21.00	330	13.00	330	13.00	622	24.50	13	0.50
12.00	610	24.00	356	14.00	356	14.00	698	27.50	13	0.50
14.00	686	27.00	381	15.00	381	15.00	787	31.00	13	0.50
16.00	762	30.00	406	16.00	406	16.00	914	36.00	13	0.50
18.00	864	34.00	--	--	432	17.00	978	38.50	13	0.50
20.00	914	36.00	--	--	457	18.00	978	38.50	13	0.50
22.00	--	--	--	--	--	--	1067	42.00	13	0.50
24.00	1067	42.00	--	--	508	20.00	1295	51.00	13	0.50
26.00	--	--	--	--	559	22.00	1295	51.00	--	--
28.00	--	--	--	--	610	24.00	1448	57.00	--	--
30.00	--	--	--	--	610	24.00	1524	60.00	--	--
32.00	--	--	--	--	711	28.00	--	--	--	--
34.00	--	--	--	--	762	30.00	--	--	--	--
36.00	--	--	--	--	711	28.00	1956	77.00	--	--

300 LB. FACE TO FACE DIMENSIONS PER ASME B16.10												
Nominal Size	Ball Long Pattern		Ball Short Pattern		Gate Solid Wedge, Disc, and Conduit		Globe and Lift Check		Swing Check		For RTJ add:	
	mm	inch	mm	inch	mm	inch	mm	inch	mm	inch	mm	inch
0.50	140	5.50	140	5.50	140	5.50	152	6.00	--	--	11	0.44
0.75	152	6.00	152	6.00	152	6.00	178	7.00	--	--	13	0.50
1.00	165	6.50	165	6.50	165	6.50	203	8.00	216	8.50	13	0.50
1.25	178	7.00	178	7.00	178	7.00	216	8.50	229	9.00	13	0.50
1.50	190	7.50	190	7.50	190	7.50	229	9.00	241	9.50	13	0.50
2.00	216	8.50	216	8.50	216	8.50	267	10.50	267	10.50	16	0.62
2.50	241	9.50	241	9.50	241	9.50	292	11.50	292	11.50	16	0.62
3.00	282	11.12	282	11.12	282	11.12	318	12.50	318	12.50	16	0.62
4.00	305	12.00	305	12.00	305	12.00	356	14.00	356	14.00	16	0.62
5.00	--	--	--	--	381	15.00	400	15.75	400	15.75	16	0.62
6.00	403	15.88	403	15.88	403	15.88	444	17.50	444	17.50	16	0.62
8.00	502	19.75	419	16.50	419	16.50	559	22.00	533	21.00	16	0.62
10.00	568	22.38	457	18.00	457	18.00	622	24.50	622	24.50	16	0.62
12.00	648	25.50	502	19.75	502	19.75	711	28.00	711	28.00	16	0.62
14.00	762	30.00	572	22.50	762	30.00	--	--	838	33.00	16	0.62
16.00	838	33.00	610	24.00	838	33.00	--	--	864	34.00	16	0.62
18.00	914	36.00	660	26.00	914	36.00	--	--	978	38.50	16	0.62
20.00	991	39.00	711	28.00	991	39.00	--	--	1016	40.00	19	0.75
22.00	1092	43.00	--	--	1092	43.00	--	--	1118	44.00	22	0.88
24.00	1143	45.00	813	32.00	1143	45.00	--	--	1346	53.00	22	0.88
26.00	1245	49.00	--	--	1245	49.00	--	--	1346	53.00	25	1.00
28.00	1346	53.00	--	--	1346	53.00	--	--	1499	59.00	25	1.00
30.00	1397	55.00	--	--	1397	55.00	--	--	1594	62.75	25	1.00
32.00	1524	60.00	--	--	1524	60.00	--	--	--	--	28	1.12
34.00	1626	64.00	--	--	1626	64.00	--	--	--	--	28	1.12
36.00	1727	68.00	--	--	1727	68.00	--	--	2083	82.00	28	1.12

600 LB. FACE TO FACE DIMENSIONS PER ASME B16.10

Nominal Size	Ball Long Pattern		Gate Solid Wedge, Double Disc, and Conduit Long Pattern		Globe, Lift Check, and Swing Check Long Pattern		For RTJ add:	
	mm	inch	mm	inch	mm	inch	mm	inch
0.50	165	6.50	165	6.50	165	6.50	-2	-0.06
0.75	190	7.50	190	7.50	190	7.50	0	0
1.00	216	8.50	216	8.50	216	8.50	0	0
1.25	229	9.00	229	9.00	229	9.00	0	0
1.50	241	9.50	241	9.50	241	9.50	0	0
2.00	292	11.50	292	11.50	292	11.50	3	0.12
2.50	330	13.00	330	13.00	330	13.00	3	0.12
3.00	356	14.00	356	14.00	356	14.00	3	0.12
4.00	432	17.00	432	17.00	432	17.00	3	0.12
5.00	--	--	508	20.00	508	20.00	3	0.12
6.00	559	22.00	559	22.00	559	22.00	3	0.12
8.00	660	26.00	660	26.00	660	26.00	3	0.12
10.00	787	31.00	787	31.00	787	31.00	3	0.12
12.00	838	33.00	838	33.00	838	33.00	3	0.12
14.00	889	35.00	889	35.00	889	35.00	3	0.12
16.00	991	39.00	991	39.00	991	39.00	3	0.12
18.00	1092	43.00	1092	43.00	1092	43.00	3	0.12
20.00	1194	47.00	1194	47.00	1194	47.00	6	0.25
22.00	1295	51.00	1295	51.00	1295	51.00	10	0.38
24.00	1397	55.00	1397	55.00	1397	55.00	10	0.38
26.00	1448	57.00	1448	57.00	1448	57.00	13	0.50
28.00	1549	61.00	1549	61.00	1600	63.00	13	0.50
30.00	1651	65.00	1651	65.00	1651	65.00	13	0.50
32.00	1778	70.00	1778	70.00	--	--	16	0.62
34.00	1930	76.00	1930	76.00	--	--	16	0.62
36.00	2083	82.00	2083	82.00	2083	82.00	16	0.62

900 LB. FACE TO FACE DIMENSIONS PER ASME B16.10

Nominal Size	Ball Long Pattern		Gate Solid Wedge, Double Disc, and Conduit Long Pattern		Globe Lift Check and Swing Check Long Pattern		For RTJ add:	
	mm	inch	mm	inch	mm	inch	mm	inch
0.75	--	--	--	--	229	9.00	0	0
1.00	254	10.00	254	10.00	254	10.00	0	0
1.25	279	11.00	279	11.00	279	11.00	0	0
1.50	305	12.00	305	12.00	305	12.00	0	0
2.00	368	14.50	368	14.50	368	14.50	3	0.12
2.50	419	16.50	419	16.50	419	16.50	3	0.12
3.00	381	15.00	381	15.00	381	15.00	3	0.12
4.00	457	18.00	457	18.00	457	18.00	3	0.12
5.00	--	--	559	22.00	559	22.00	3	0.12
6.00	610	24.00	610	24.00	610	24.00	3	0.12
8.00	737	29.00	737	29.00	737	29.00	3	0.12
10.00	838	33.00	838	33.00	838	33.00	3	0.12
12.00	965	38.00	965	38.00	965	38.00	3	0.12
14.00	1029	40.50	1029	40.50	1029	40.50	10	0.38
16.00	1130	44.50	1130	44.50	1130	44.50	10	0.38
18.00	1219	48.00	1219	48.00	1219	48.00	13	0.50
20.00	1321	52.00	1321	52.00	1321	52.00	13	0.50
22.00	--	--	--	--	--	--	--	--
24.00	1549	61.00	1549	61.00	1549	61.00	19	0.75

1500 LB. VALVE FACE TO FACE DIMENSIONS PER ASME B16.10

Nominal Size	Ball Long Pattern		Gate Solid Wedge, Double Disc, and Conduit Long Pattern		Globe, Lift Check, and Swing Check Long Pattern		For RTJ add:	
	mm	inch	mm	inch	mm	inch	mm	inch
0.50	--	--	--	--	216	8.50	0	0
0.75	--	--	--	--	229	9.00	0	0
1.00	--	--	254	10.00	254	10.00	0	0
1.25	--	--	279	11.00	279	11.00	0	0
1.50	--	--	305	12.00	305	12.00	0	0
2.00	368	14.50	368	14.50	368	14.50	3	0.12
2.50	419	16.50	419	16.50	419	16.50	3	0.12
3.00	470	18.50	470	18.50	470	18.50	3	0.12
4.00	546	21.50	546	21.50	546	21.50	3	0.12
5.00	-	-	673	26.50	673	26.50	3	0.12
6.00	705	27.75	705	27.75	705	27.75	6	0.25
8.00	832	32.75	832	32.75	832	32.75	10	0.38
10.00	991	39.00	991	39.00	991	39.00	10	0.38
12.00	1130	44.50	1130	44.50	1130	44.50	16	0.62
14.00	1257	49.50	1257	49.50	1257	49.50	19	0.75
16.00	1384	54.50	1384	54.50	1384	54.50	22	0.88
18.00	1537	60.50	1537	60.50	1537	60.50	22	0.88
20.00	1664	65.50	1664	65.50	1664	65.50	22	0.88
22.00	--	--	--	--	--	--	--	--
24.00	--	--	1943	76.50	1943	76.50	28	1.12

2500 LB. FACE TO FACE DIMENSIONS PER ASME B16.10

Nominal Size	Ball Long Pattern		Gate Solid Wedge, Double Disc, and Conduit Long Pattern		Globe Lift Check and Swing Check Long Pattern		For RTJ add:	
	mm	inch	mm	inch	mm	inch	mm	inch
0.50	--	--	264	10.38	264	10.38	0	0
0.75	--	--	273	10.75	273	10.75	0	0
1.00	--	--	308	12.12	308	12.12	0	0
1.25	--	--	349	13.75	349	13.75	3	0.12
1.50	--	--	384	15.12	384	15.12	3	0.12
2.00	451	17.75	451	17.75	451	17.75	3	0.12
2.50	508	20.00	508	20.00	508	20.00	6	0.25
3.00	578	22.75	578	22.75	578	22.75	6	0.25
4.00	673	26.50	673	26.50	673	26.50	10	0.38
5.00	--	--	794	31.25	794	31.25	13	0.50
6.00	914	36.00	914	36.00	914	36.00	13	0.50
8.00	1022	40.25	1022	40.25	1022	40.25	16	0.62
10.00	1270	50.00	1270	50.00	1270	50.00	22	0.88
12.00	1422	56.00	1422	56.00	1422	56.00	22	0.88

Multiply value by the following factors to convert from:

Quantity Name	Imperial Units	Metric Units	Imperial to Metric	Metric to Imperial
Mass	pound (lb.)	kilogram (kg)	0.454	2.20
	short ton (2000 lb.)	metric ton (tonne)	0.907	1.10
	long ton (2204 lb.)	metric ton (tonne)	1.02	0.984
Linear Measure	inches (in)	millimeters (mm)	25.4	0.0394
	feet (ft)	millimeters (mm)	305	0.00328
	feet (ft)	metres (m)	0.305	3.2808
	yards (yd)	metres (m)	0.914	1.09
	miles (mi)	kilometers (km)	1.61	.621
Temperature	Fahrenheit (°F)	Celsius (°C)	$\frac{(98.6^{\circ}\text{F} - 32) \times 5}{9} = 37^{\circ}\text{C}$	$\frac{37^{\circ}\text{C} \times 9}{5} + 32 = 98.6^{\circ}\text{F}$
Pressure	pounds per square inch (p.s.i.)	kilopascal (kPa)	6.89	0.145
		megapascal (MPa)	0.00689	1.45
Area	square feet (ft ²)	square metre (m ²)	0.0929	10.8
	square inch (in ²)	square kilometre (km ²)	645	0.00155
	acres (ac)	hectares (ha)	0.405	2.47
Volume	cubic inches (in ³)	cubic centimetres (cm ³)	16.4	0.061
	cubic ft (ft ³)	cubic metres (m ³)	0.0283	35.3
	gallons (Cdn)	litre (L)	4.55	0.220
	gallons (US)	litre (L)	3.79	0.264
Density	pounds per cubic inch (lb/in ³)	kilograms per cubic metre (kg/m ³)	.27677	0.0000361
Energy	foot pound (ft. lbf)	joule (J)	1.36	0.738
Mass per unit length	pounds per foot (lb./ft)	kilogram per metre (kg/m)	1.49	0.672
	tons per mile (T/mi)	metric ton per kilometre (t/km)	0.564	1.77

Other: Density of Steel 0.2836 lb/in³ or 7850 kg/m³
 1 kg/mm² = 1422.3 p.s.i



MISSION STATEMENT

We will safely provide outstanding quality and service as defined by our customers, by continually challenging ourselves to improve.

QUALITY POLICY

Comco Pipe & Supply Company (Comco) will consistently provide customers with products & services that meet their requirements. Quality is a top priority of Comco and is reflected in the company's mission statement.

VISION STATEMENT

To be recognized as an industry leader for pipe, valve, flange and fitting distributor, delivering exceptional product and services.